



Conscious of the importance of the Sava River for the economic, social and cultural development of the region,

Desirous of development of the inland navigation on the Sava River,

Having regard to the European Agreement on Main Inland Waterways of International Importance (AGN), and in particular Annex III thereof,

Believing that public authorities can contribute significantly to the development of the waterway of the Sava river through their engagement to the provision and maintenance of an appropriate waterway based on internationally agreed classifications and parameters,

In accordance with Article 16 Paragraph 1 (a) and 2 of the Framework Agreement of the Sava River Basin, the International Sava River Basin Commission (hereinafter: Sava Commission), on its 22nd Session held on June 8, 2010, has adopted the following

DECISION – 13/10

on adoption of

RULES FOR DEFINITION OF WINTER PORTS AND WINTER SHELTERS ON THE SAVA RIVER BASIN

1. Text of the Rules for definition of winter ports and winter shelters on the Sava River Basin is attached to this Decision as its integral part.
2. Parties shall adopt the measures necessary to implement this Decision and notify the Sava Commission.
3. This Decision shall be binding for the Parties unless any of the Sava Commission members withdraws his vote within 30 days after the decision has been adopted, or informs the Sava Commission that the Decision is subject to the approval of the relevant authority of his State.

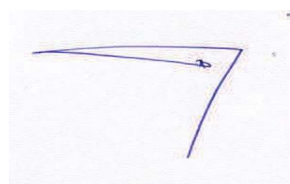
If any of the Sava Commission members withdraws his vote within 30 days after the decision has been adopted, or informs the Sava Commission that the Decision is subject to the approval of the relevant authority of his State, the Sava Commission Secretariat shall, thereof, inform all other Sava Commission members.

4. If no member withdraws his vote nor informs the Sava Commission that the Decision is subject to the approval of the relevant authority of his State, the Decision shall enter into force on July 8, 2010.
5. Upon entry into force, this Decision shall be binding in its entirety and directly applicable in the Parties.
6. The Sava Commission Secretariat shall notify the Parties of the entry into force of the Decision.

Ref. No: 1S-22-D-10-4/1-2

Zagreb, June 8, 2010

Mr. Branko Bačić



Chairman of the Sava Commission



Conscious of the importance of the Sava River for the economic, social and cultural development of the region,

Desirous of development of the inland navigation on the Sava River,

Having regard to the European Agreement on Main Inland Waterways of International Importance (AGN), and in particular Annex III thereof,

Believing that public authorities can contribute significantly to the development of the waterway of the Sava river through their engagement to the provision and maintenance of an appropriate waterway system based on internationally agreed rules,

In accordance with Article 16 Paragraph 1 (a) and 2 of the Framework Agreement on the Sava River Basin the International Sava River Basin Commission (hereinafter: ISRBC) at its 36th Session held on October 14, 2014, has adopted the following

DECISION – 16/14

on adoption of

AMENDMENTS TO THE DECISION 13/10 ON ADOPTION OF RULES FOR DEFINITION OF WINTER PORTS AND WINTER SHELTERS IN THE SAVA RIVER BASIN

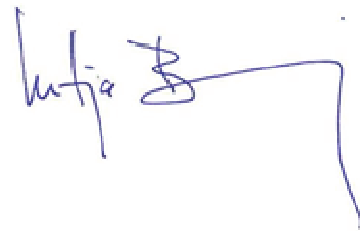
1. Text of the Amendments to the Decision 13/10 on adoption of the Rules for definition of winter ports and winter shelters in the Sava River Basin and Consolidated text of Rules for definition of winter harbours and winter shelters in the Sava River Basin are attached to this Decision as its integral part.
2. Parties shall adopt the measures necessary to implement this Decision and notify the ISRBC.
3. This Decision shall be binding for the Parties unless any of the ISRBC members withdraws his vote within 30 days after the decision has been adopted, or informs the ISRBC that the Decision is subject to the approval of the relevant authority of his State.

If any of the ISRBC members withdraws his vote within 30 days after the decision has been adopted, or informs the ISRBC that the Decision is subject to the approval of the relevant authority of his State, the ISRBC Secretariat shall, thereof, inform all other ISRBC members.

4. If no member withdraws his vote nor informs the ISRBC that the Decision is subject to the approval of the relevant authority of his State, the Decision shall enter into force on November 14, 2014.
5. Upon entry into force, this Decision shall be binding in its entirety and directly applicable in the Parties.
6. The ISRBC Secretariat shall notify the Parties of the entry into force of the Decision.

Ref. No: 1S-36-D-14-3/1-2
Zagreb, October 14, 2014

Mitja Bricelj
Chairman of the ISRBC

A handwritten signature in blue ink, appearing to read 'Mitja Bricelj', with a long horizontal stroke extending to the right and a vertical line at the end.



Doc. No. 1R-59-D-22-2/1-2

Conscious of the importance of the Sava River for the economic, social and cultural development of the region,

Desirous of development of the inland navigation on the Sava River,

Having regard to the European Agreement on Main Inland Waterways of International Importance (AGN), and in particular Annex III thereof,

Believing that public authorities can contribute significantly to the development of the waterway of the Sava river through their engagement to the provision and maintenance of an appropriate waterway based on internationally agreed classifications and parameters,

In accordance with Article 16 Paragraph 1 (a) and 2 of the Framework Agreement of the Sava River Basin and Article 9 Paragraph 1 of the Protocol on the Navigation Regime to the Framework Agreement of the Sava River Basin, the International Sava River Basin Commission (hereinafter: Sava Commission), has adopted the following

DECISION 3/22

on adoption of the

AMENDMENTS TO THE DECISION 16/14 ON ADOPTION OF RULES FOR DEFINITION OF WINTER PORTS AND WINTER SHELTERS IN THE SAVA RIVER BASIN

1. Text of the Amendments to the Decision 16/14 on adoption of the Rules for definition of winter ports and winter shelters in the Sava River Basin and Consolidated text of Rules for definition of winter ports and winter shelters in the Sava River Basin are attached to this Decision as its integral part.
2. The Parties shall adopt the measures necessary to implement this Decision and notify the ISRBC.
3. This Decision shall be binding upon all the Parties unless any of the Sava Commission members withdraws his/her vote within 30 days after the decision has been made or informs the Sava Commission that the Decision is subject to approval of the relevant authority of his/her State.

4. If no member withdraws his/her vote nor informs the Sava Commission that the Decision is subject to approval of the relevant authority of his/her State, the Decision shall enter into force on April 15, 2022.
5. Upon entry into force, this Decision shall be binding in its entirety and directly applicable in the Parties.
6. The Sava Commission Secretariat shall notify the Parties of the entry into force of the Decision.

Zagreb, March 15, 2022



Ms Duška Kunštek
Chair of the Sava Commission



Doc. No. 1R-59-D-22-2/1-2

Original: ENGLISH

RULES FOR DEFINITION OF WINTER PORTS AND WINTER SHELTERS IN THE SAVA RIVER BASIN

(Consolidated text)

Adopted by Decision 3/22 of the International Sava River Basin Commission on March 15, 2022

Article 1.

These rules shall apply on inland waterways of the Sava River from the rkm 594.00 to rkm 0.00, on Kolubara river from rkm 5.00 to rkm 0.00, on Drina river from rkm 15.00 to rkm 0.00, on Bosna river from rkm 5.00 to rkm 0.00, on Vrbas river from rkm 3.00 to rkm 0.00, on Una river from rkm 15.00 to rkm 0.00, and on Kupa river from rkm 5.00 to rkm 0.00.

Article 2.

The winter port is a navigation security facility that represents a constructed or natural water area on the waterway, which has been set and equipped as a safe shelter for vessels from damage inflicted by ice, high water or other bad weather.

The winter shelter is a natural part of the water area on the waterway, port, and other sort of wharf that serves as a necessary accommodation of the vessels for protection from the damages during immediate arrival of ice, high water or other bad weather.

Article 3.

Winter ports and winter shelters can be used by all vessels under equal conditions.

Article 4.

The vessels carrying dangerous goods must be settled at winter ports especially determined for such purpose.

Vessels defined under paragraph 1 of this Article can be settled at other winter ports, upon authorisation of the competent bodies of the Parties to the Framework Agreement on the Sava River Basin (hereinafter referred to as "competent bodies").

Article 5.

At the winter ports and winter shelters, the vessels carrying dangerous goods must be accommodated separately from other vessels and closest to the exit. In case of winter ports and winter shelters on the open river, those vessels must be accommodated downstream from other vessels.

Order at the winter ports and winter shelters shall be defined by the competent body of the Party on whose territory the winter ports or winter shelter is located.

Article 6.

The vessels can be sheltered at winter ports and winter shelters and stay there as long as measures resulting from extraordinary circumstances declared by the competent body last.

Upon expiration of measures declared for extraordinary circumstances, the boat master can use winter ports and winter shelter as he decides so, but only in the event that it is necessary for protection and rescue of human lives, security of the vessels and persons on board and navigation safety. These events shall be deemed extraordinary circumstances.

The boatmasters of all vessels using winter ports or winter shelter shall immediately notify the competent body concerning the reason, location and time of berthing.

The boatmaster defined under paragraph 2 of this article shall, if possible, in advance request the permission from the competent body for extraordinary use of winter ports and winter shelter.

Article 7.

The fee for use of winter ports and winter shelter caused by extraordinary circumstances shall not be charged.

Article 8.

Winter ports and winter shelters on the Sava River and its tributaries, as well as financing and maintenance methods shall be defined by the competent bodies.

The existing ports and wharfs can be defined as winter ports and winter shelters.

The competent bodies shall notify the Sava Commission with regard to defined winter ports and winter shelters within its territory using the form under Annex 1 of these Rules.

Article 9.

The winter ports and winter shelters on the Sava River Basin and its tributaries shall meet the appropriate general navigation security requirements stipulated under Annex 3 of this Rules.

General requirements define:

- Location of the winter ports, respectively the winter shelter;
- Systematisation (commitment) of winter ports and winter shelter as per type of cargo;
- Categorisation of winter ports and winter shelters in accordance with the waterway category in the sector;
- Conditions for marking the winter ports and winter shelters (in accordance with the Sava Commission's rules for marking).

Special requirements shall be defined by the competent bodies, and these shall at minimum refer to:

- Commanding authority at the winter ports and winter shelter;
- Communication method from the vessels to shore;
- Vessel unberthing and anchoring method;
- Waste and other substances reception method;
- Fire protection, sanitary node with running water, electricity supply solution;
- Approach route.

Article 10.

Annex 2 of this document presents a list of defined winter ports and winter shelters.

On grounds of information obtained from the Parties to the Framework Agreement on the Sava River Basin, the Sava Commission shall, on annual basis, update the Annex 2 in parallel with the adoption of the Marking Plan on the Sava River and its tributaries.

Annex 1

QUESTIONNAIRE

regarding winter ports and winter shelters on the Sava River Basin

Name				
Position				
Bank	River kilometre			
<i>left/right</i>				
Dimensions				
Entrance depth at LNL (m)	Water area depth at LNL (m)	Entrance width (m)	Length (m)	Width (m)
Capacity				
Vessels total	Out of which for tankers			
Protected against ice drift				
<i>yes/no</i>				
Infrastructure				
Turning area	Mooring equipment	Illuminated Entrance	Marking	Security service (guards, firemen)
<i>yes/no</i>	<i>yes/no</i>	<i>yes/no</i>	<i>yes/no</i>	<i>yes/no</i>
Solid waste disposal facilities	Oil and oily waters disposal facilities	Other waste disposal facilities	Post office	Telephone
<i>yes/no</i>	<i>yes/no</i>	<i>yes/no</i>	<i>yes/no</i>	<i>yes/no</i>
Health services	Potable water	Road	Repair service	Other
<i>yes/no</i>	<i>yes/no</i>	<i>yes/no</i>	<i>yes/no</i>	
Closest inhabited places				
Name		Distance	Type of service and infrastructure in the settlement	
Relevant gauge station				
Name		ASL height „0“	LNL	HNL
Competent port master office				
Name		River kilometre	Contact person	Contact phone number
Sketch – scheme of the winter port/winter shelter				
Note				

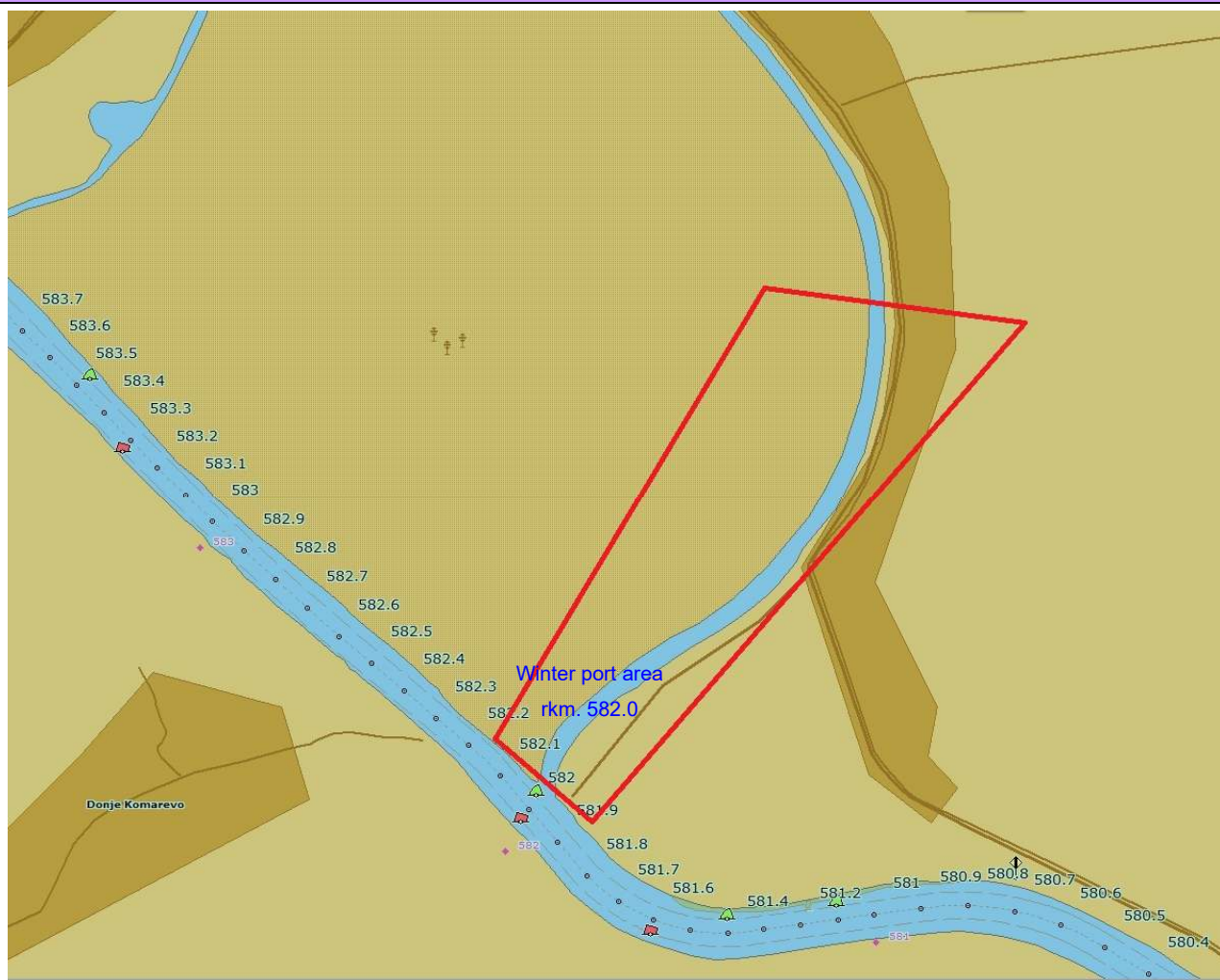
Annex 2

OUTLINE

of winter ports and winter shelters on the Sava River Basin

Name				
WINTER PORT PRELOŠČICA				
Position				
Bank	River kilometre			
<i>left</i>	<i>582.0</i>			
Dimensions				
Entrance depth at LNL (m)	Water area depth at LNL (m)	Entrance width (m)	Length (m)	Width (m)
<i>1.30</i>	<i>1.40 - 1.90</i>	<i>35</i>	<i>950</i>	<i>20</i>
Capacity				
Vessels total	Out of which for tankers			
<i>18</i>	<i>8</i>			
Protected against ice drift				
<i>yes</i>				
Infrastructure				
Turning area	Mooring equipment	Illuminated Entrance	Marking	Security service (guards, firemen)
<i>In the Sava River</i>	<i>no</i>	<i>no</i>	<i>no</i>	<i>no</i>
Solid waste disposal facilities	Oil and oily waters disposal facilities	Other waste disposal facilities	Post office	Telephone
<i>no</i>	<i>no</i>	<i>no</i>	<i>In Preloščica settlement</i>	<i>Mobile-crew</i>
Health services	Potable water	Road	Repair service	Other
<i>In Sisak</i>	<i>no</i>	<i>yes</i>	<i>no</i>	
Closest inhabited places				
Name		Distance	Type of service and infrastructure in the settlement	
<i>Preloščica</i>		<i>Winter port is in village</i>	<i>Road, shop, post office</i>	
Relevant gauge station				
Name		ASL height „0“	LNL	HNL
<i>Crnac</i>		<i>91.34</i>	<i>89.51 (-183 cm)</i>	<i>98.26 (+692 cm)</i>
Competent port master office				
Name		River kilometre	Contact person	Contact phone number
<i>Port Master Office Sisak</i>		<i>Kupa 3.50</i>	<i>Željko Kozić</i>	<i>+385 98 230 245</i>

Sketch – scheme of the winter port/winter shelter

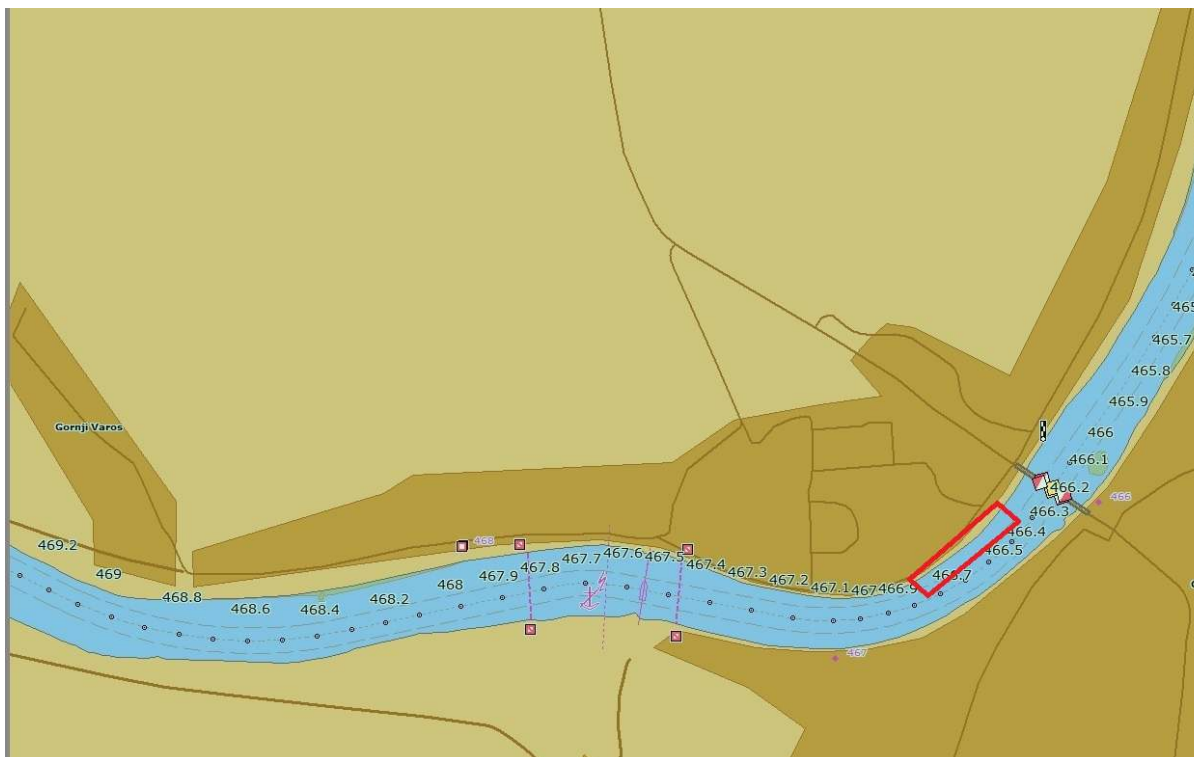


Note

Upon decision of the Port Master Office, the master of the winter port organises watch and order at the winter port

Name				
WINTER SHELTER STARA GRADIŠKA				
Position				
Bank	River kilometre			
<i>left</i>	<i>466.4 -466.9</i>			
Dimensions				
Entrance depth at LNL (m)	Water area depth at LNL (m)	Entrance width (m)	Length (m)	Width (m)
-	<i>2.20 - 2.50</i>	-	<i>400</i>	<i>20</i>
Capacity				
Vessels total	Out of which for tankers			
<i>8</i>	-			
Protected against ice drift				
<i>yes</i>				
Infrastructure				
Turning area	Mooring equipment	Illuminated Entrance	Marking	Security service (guards, firemen)
<i>In the Sava River</i>	<i>no</i>	<i>no</i>	<i>no</i>	<i>no</i>
Solid waste disposal facilities	Oil and oily waters disposal facilities	Other waste disposal facilities	Post office	Telephone
<i>no</i>	<i>no</i>	<i>no</i>	<i>Yes, in St. Gradiška</i>	<i>Mobile-crew</i>
Health services	Potable water	Road	Repair service	Other
<i>In Stara Gradiška</i>	<i>no</i>	<i>yes</i>	<i>no</i>	
Closest inhabited places				
Name		Distance	Type of service and infrastructure in the settlement	
<i>Stara Gradiška</i>		<i>In the settlement</i>	<i>Road, shop, post office, police station</i>	
Relevant gauge station				
Name		ASL height „0“	LNL	HNL
<i>Jasenovac</i>		<i>86.82</i>	<i>86.08 (-74 cm)</i>	<i>94.98 (+816)</i>
Competent port master office				
Name		River kilometre	Contact person	Contact phone number
<i>Port Master Office Slavonski Brod</i>		<i>Sava 362.5</i>	<i>Mladen Žakula</i>	<i>+385 35 446 655</i>

Sketch – scheme of the winter port/winter shelter



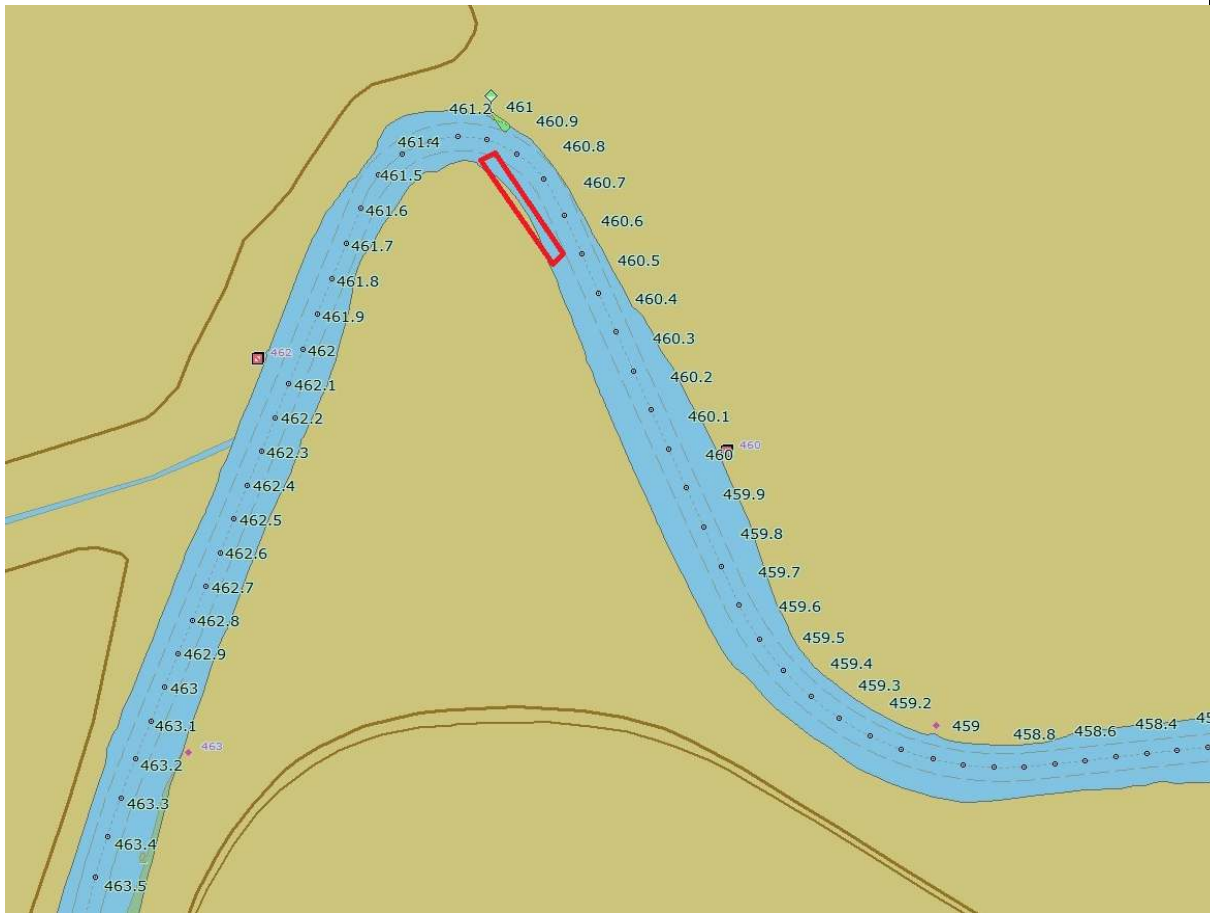
Note

Water Police dock placed in the winter shelter at rkm 466.55 – 466.6

Upon decision of the Port Master Office, the master of the winter shelter organises watch and order at the winter shelter

Name				
WINTER SHELTER PIVARA				
Position				
Bank	River kilometre			
<i>Right</i>	<i>461.0</i>			
Dimensions				
Entrance depth at LNL (m)	Water area depth at LNL (m)	Entrance width (m)	Length (m)	Width (m)
	<i>2.00-2.50</i>			
Capacity				
Vessels total	Out of which for tankers			
<i>5+1</i>	<i>0</i>			
Protected against ice drift				
<i>yes</i>				
Infrastructure				
Turning area	Mooring equipment	Illuminated Entrance	Marking	Security service (guards, firemen)
<i>In the Sava River</i>	<i>no</i>	<i>no</i>	<i>no</i>	<i>no</i>
Solid waste disposal facilities	Oil and oily waters disposal facilities	Other waste disposal facilities	Post office	Telephone
<i>no</i>	<i>no</i>	<i>no</i>	<i>In Gradiška settlement</i>	<i>Mobile-crew</i>
Health services	Potable water	Road	Repair service	Other
<i>In Gradiška</i>	<i>no</i>	<i>yes</i>	<i>no</i>	
Closest inhabited places				
Name		Distance	Type of service and infrastructure in the settlement	
<i>Gadiška</i>		<i>4000 m</i>	<i>Road, shop, post office</i>	
Relevant gauge station				
Name		ASL height „0“	LNL	HNL
<i>Davor</i>		<i>82.59</i>	<i>83.49 (+90)</i>	<i>92.19 (+960)</i>
Competent port master office				
Name		River kilometre	Contact person	Contact phone number
<i>Port Master Office Brčko</i>		<i>Sava 228.0</i>	<i>Marina Simikić</i>	<i>+387 49 217 589</i> <i>+387 65 287 676</i>

Sketch – scheme of the winter port/winter shelter

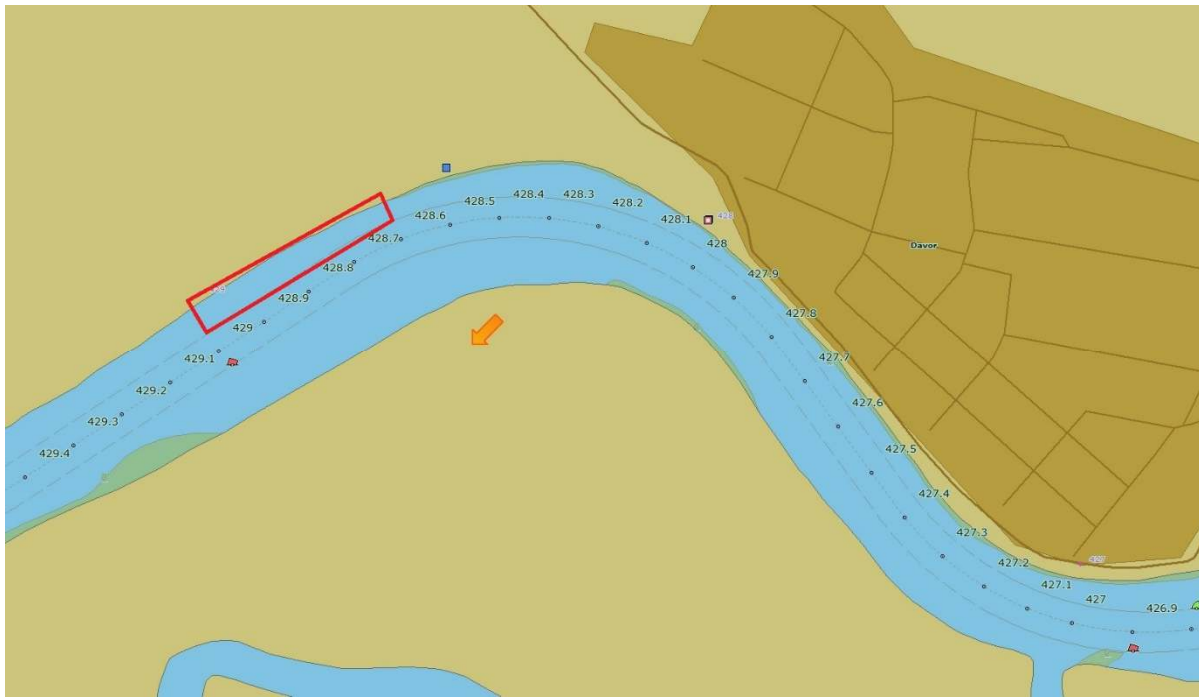


Note

Upon decision of the Port Master Office, the master of the winter shelter organises watch and order at the winter shelter

Name				
WINTER SHELTER DAVOR - MATURA				
Position				
Bank	River kilometre			
<i>left</i>	<i>428.7 – 429.1</i>			
Dimensions				
Entrance depth at LNL (m)	Water area depth at LNL (m)	Entrance width (m)	Length (m)	Width (m)
-	<i>2.00</i>	-	<i>400</i>	<i>40</i>
Capacity				
Vessels total	Out of which for tankers			
<i>12</i>	<i>0</i>			
Protected against ice drift				
<i>yes</i>				
Infrastructure				
Turning area	Mooring equipment	Illuminated Entrance	Marking	Security service (guards, firemen)
<i>In the Sava River</i>	<i>no</i>	<i>no</i>	<i>no</i>	<i>no</i>
Solid waste disposal facilities	Oil and oily waters disposal facilities	Other waste disposal facilities	Post office	Telephone
<i>no</i>	<i>no</i>	<i>no</i>	<i>In Davor settlement</i>	<i>Mobile-crew</i>
Health services	Potable water	Road	Repair service	Other
<i>In Davor & N. Gradiška</i>	<i>no</i>	<i>Dirt Road</i>	<i>no</i>	
Closest inhabited places				
Name		Distance	Type of service and infrastructure in the settlement	
<i>Davor</i>		<i>1.000 m</i>	<i>Road, shop, post office</i>	
Relevant gauge station				
Name		ASL height „0“	LNL	HNL
<i>Davor</i>		<i>82.59</i>	<i>83.49 (+90)</i>	<i>92.19 (+960)</i>
Competent port master office				
Name		River kilometre	Contact person	Contact phone number
<i>Slavonski Brod</i>		<i>Sava 362.5</i>	<i>Mladen Žakula</i>	<i>+385 35 446 655</i>

Sketch – scheme of the winter port/winter shelter

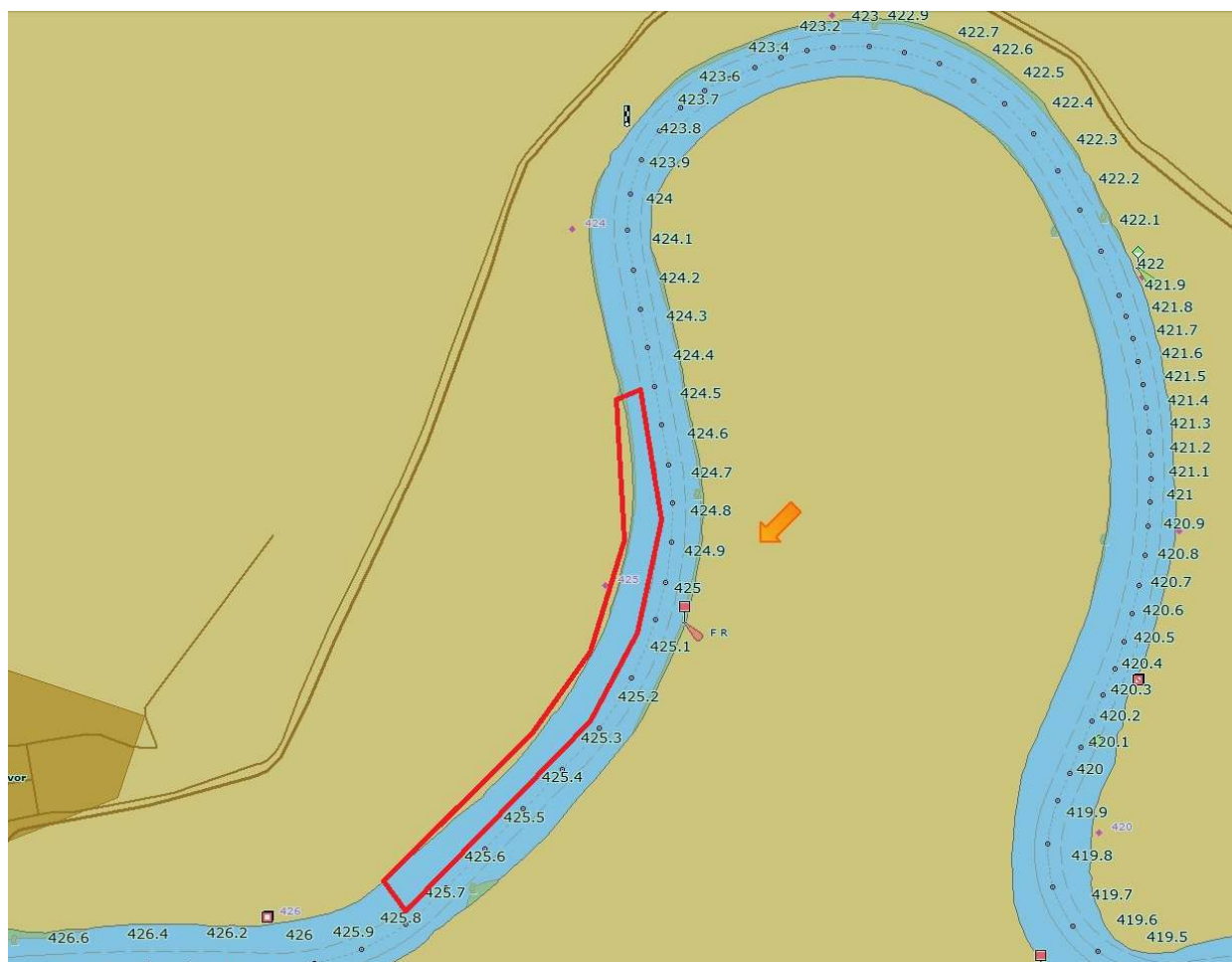


Note

Upon decision of the Port Master Office, the master of the winter shelter organises watch and order at the winter shelter

Name				
WINTER SHELTER DAVOR - LAZINE				
Position				
Bank	River kilometre			
<i>left</i>	<i>424.5 – 425.8</i>			
Dimensions				
Entrance depth at LNL (m)	Water area depth at LNL (m)	Entrance width (m)	Length (m)	Width (m)
-	<i>2.20</i>	-	<i>1.300</i>	<i>30</i>
Capacity				
Vessels total	Out of which for tankers			
<i>39</i>	<i>39</i>			
Protected against ice drift				
<i>yes</i>				
Infrastructure				
Turning area	Mooring equipment	Illuminated Entrance	Marking	Security service (guards, firemen)
<i>In the Sava River</i>	<i>no</i>	<i>no</i>	<i>no</i>	<i>no</i>
Solid waste disposal facilities	Oil and oily waters disposal facilities	Other waste disposal facilities	Post office	Telephone
<i>no</i>	<i>no</i>	<i>no</i>	<i>No, in Davor settlement</i>	<i>Mobile-crew</i>
Health services	Potable water	Road	Repair service	Other
<i>In Davor & N. Gradiška</i>	<i>no</i>	<i>Dirt Road</i>	<i>no</i>	
Closest inhabited places				
Name		Distance	Type of service and infrastructure in the settlement	
<i>Davor</i>		<i>1.500 m</i>	<i>Road, shop, post office</i>	
Relevant gauge station				
Name		ASL height „0“	LNL	HNL
<i>Davor</i>		<i>82.59</i>	<i>83.49 (+90)</i>	<i>92.19 (+960)</i>
Competent port master office				
Name		River kilometre	Contact person	Contact phone number
<i>Slavonski Brod</i>		<i>Sava 362.5</i>	<i>Mladen Žakula</i>	<i>+385 35 446 655</i>

Sketch – scheme of the winter port/winter shelter

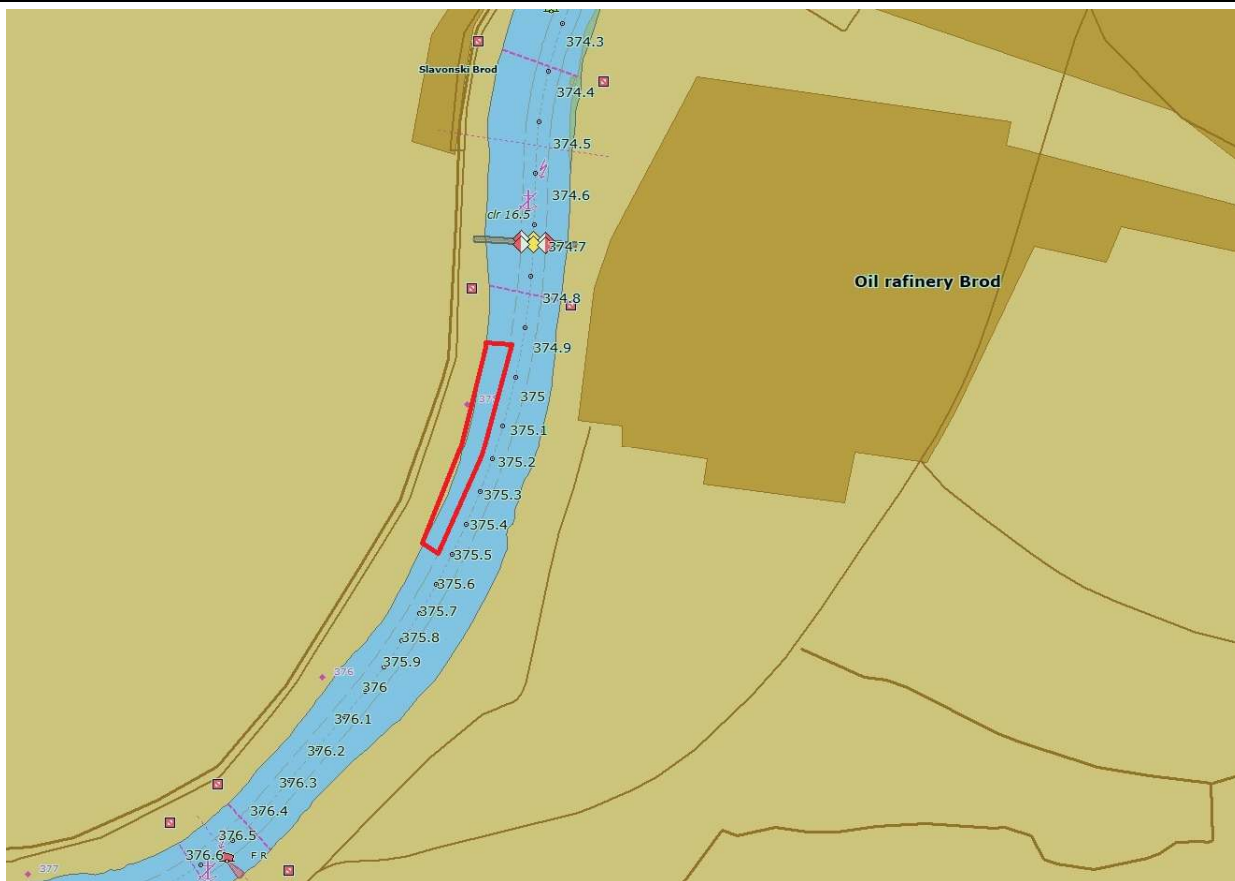


Note

Upon decision of the Port Master Office, the master of the winter shelter organises watch and order at the winter shelter

Name				
WINTER SHELTER SLAVONSKI BROD – SUSPENSION BRIDGE				
Position				
Bank	River kilometre			
<i>left</i>	<i>374.9 -375.5</i>			
Dimensions				
Entrance depth at LNL (m)	Water area depth at LNL (m)	Entrance width (m)	Length (m)	Width (m)
-	<i>2.50</i>	-	<i>600</i>	<i>50</i>
Capacity				
Vessels total	Out of which for tankers			
<i>24</i>	<i>4</i>			
Protected against ice drift				
<i>yes</i>				
Infrastructure				
Turning area	Mooring equipment	Illuminated Entrance	Marking	Security service (guards, firemen)
<i>In the Sava River</i>	<i>no</i>	<i>no</i>	<i>no</i>	<i>no</i>
Solid waste disposal facilities	Oil and oily waters disposal facilities	Other waste disposal facilities	Post office	Telephone
<i>no</i>	<i>no</i>	<i>no</i>	<i>No, in Slavonski Brod</i>	<i>Mobile-crew</i>
Health services	Potable water	Road	Repair service	Other
<i>In Slavonski Brod</i>	<i>no</i>	<i>Asphalt, macadam</i>	<i>Brodska posavina d.d.</i>	
Closest inhabited places				
Name		Distance	Type of service and infrastructure in the settlement	
<i>Slavonski Brod</i>		<i>4 000 m</i>	<i>Road, shop, post office</i>	
Relevant gauge station				
Name		ASL height „0“	LNL	HNL
<i>Slavonski Brod</i>		<i>81.80</i>	<i>81.67 (-13 cm)</i>	<i>89.18 (+738)</i>
Competent port master office				
Name		River kilometre	Contact person	Contact phone number
<i>Slavonski Brod</i>		<i>Sava 362.5</i>	<i>Mladen Žakula</i>	<i>+385 35 446 655</i>

Sketch – scheme of the winter port/winter shelter

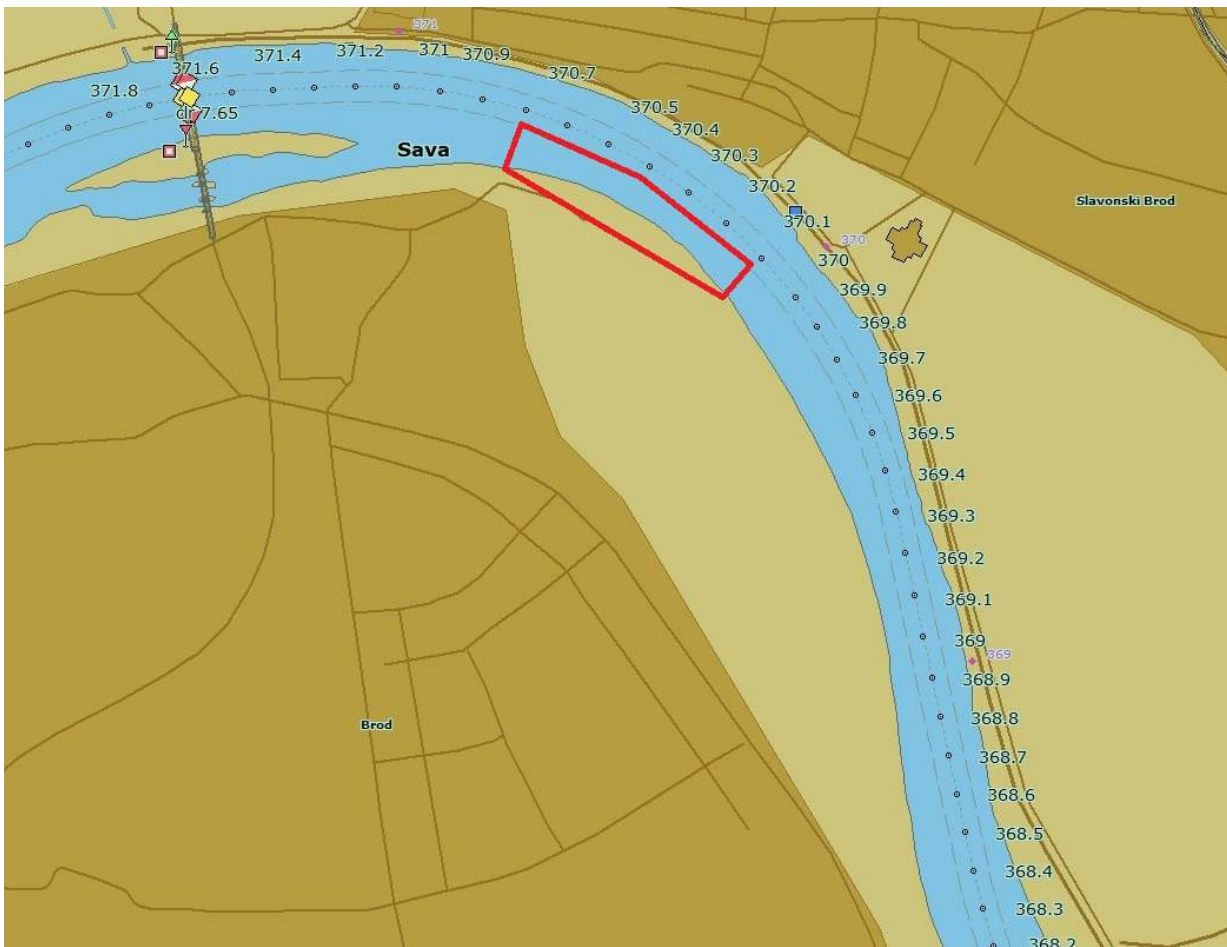


Note

Upon decision of the Port Master Office, the master of the winter shelter organises watch and order at the winter shelter

Name				
WINTER SHELTER BROD				
Position				
Bank	River kilometre			
<i>right</i>	<i>370.1 – 370.7</i>			
Dimensions				
Entrance depth at LNL (m)	Water area depth at LNL (m)	Entrance width (m)	Length (m)	Width (m)
	<i>2.00-2.50</i>		<i>600</i>	<i>50</i>
Capacity				
Vessels total	Out of which for tankers			
<i>20</i>	<i>0</i>			
Protected against ice drift				
<i>yes</i>				
Infrastructure				
Turning area	Mooring equipment	Illuminated Entrance	Marking	Security service (guards, firemen)
<i>In the Sava River</i>	<i>no</i>	<i>no</i>	<i>no</i>	<i>no</i>
Solid waste disposal facilities	Oil and oily waters disposal facilities	Other waste disposal facilities	Post office	Telephone
<i>no</i>	<i>no</i>	<i>no</i>	<i>in Brod</i>	<i>Mobile-crew</i>
Health services	Potable water	Road	Repair service	Other
<i>In.Brod</i>	<i>no</i>	<i>yes</i>	<i>no</i>	
Closest inhabited places				
Name		Distance	Type of service and infrastructure in the settlement	
<i>B.Brod</i>		<i>100 m</i>	<i>Road, shop, post office</i>	
Relevant gauge station				
Name		ASL height „0“	LNL	HNL
<i>Slav. Brod</i>		<i>81.80</i>	<i>81.67 (-13 cm)</i>	<i>89.18 (+738)</i>
Competent port master office				
Name		River kilometre	Contact person	Contact phone number
<i>Brčko</i>		<i>Sava 228.0</i>	<i>Marina Simikić</i>	<i>+387 49 217 589</i> <i>+387 65 287 676</i>

Sketch – scheme of the winter port/winter shelter

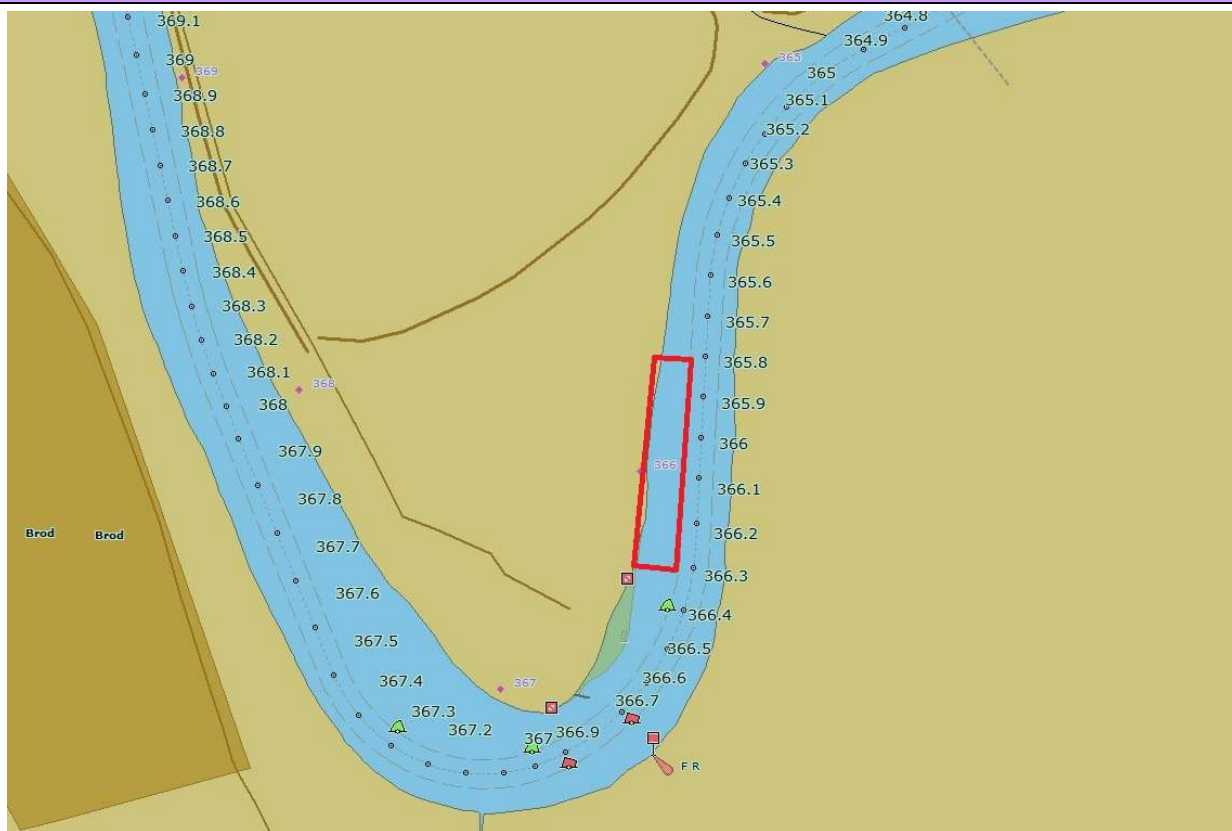


Note

Upon decision of the Port Master Office, the master of the winter shelter organises watch and order at the winter shelter

Name				
WINTER SHELTER SLAVONSKI BROD - POLOJ				
Position				
Bank	River kilometre			
<i>left</i>	<i>365.8 – 366.3</i>			
Dimensions				
Entrance depth at LNL (m)	Water area depth at LNL (m)	Entrance width (m)	Length (m)	Width (m)
-	<i>2.50</i>	-	<i>400</i>	<i>50</i>
Capacity				
Vessels total	Out of which for tankers			
<i>16</i>	<i>16</i>			
Protected against ice drift				
<i>yes</i>				
Infrastructure				
Turning area	Mooring equipment	Illuminated Entrance	Marking	Security service (guards, firemen)
<i>In the Sava River</i>	<i>no</i>	<i>no</i>	<i>no</i>	<i>no</i>
Solid waste disposal facilities	Oil and oily waters disposal facilities	Other waste disposal facilities	Post office	Telephone
<i>no</i>	<i>no</i>	<i>no</i>	<i>In Slav. Brod settlement</i>	<i>Mobile-crew</i>
Health services	Potable water	Road	Repair service	Other
<i>In Slavonski Brod</i>	<i>no</i>	<i>makadam</i>	<i>Brod. Posavina d.d.</i>	
Closest inhabited places				
Name		Distance	Type of service and infrastructure in the settlement	
<i>Slav. Brod</i>		<i>4000 m</i>	<i>Road, shop, post office</i>	
Relevant gauge station				
Name		ASL height „0“	LNL	HNL
<i>Slavonski Brod</i>		<i>81.80</i>	<i>81.67 (-13 cm)</i>	<i>89.18 (+738)</i>
Competent port master office				
Name		River kilometre	Contact person	Contact phone number
<i>Slavonski Brod</i>		<i>Sava 362.5</i>	<i>Mladen Žakula</i>	<i>+385 35 446 655</i>

Sketch – scheme of the winter port/winter shelter

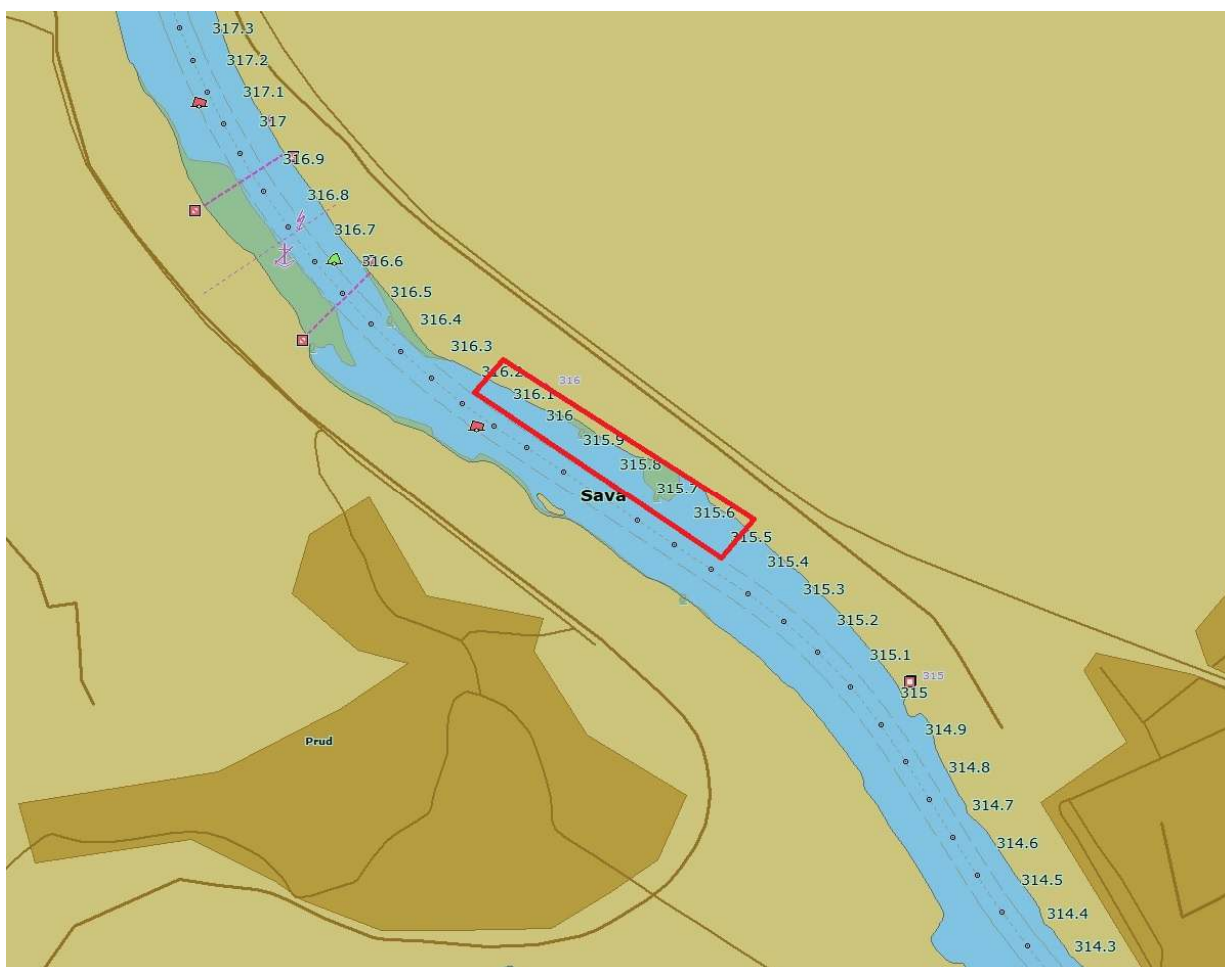


Note

Upon decision of the Port Master Office, the master of the winter shelter organises watch and order at the winter shelter

Name				
WINTER SHELTER SLAVONSKI ŠAMAC				
Position				
Bank	River kilometre			
<i>left</i>	<i>315.5 – 316.2</i>			
Dimensions				
Entrance depth at LNL (m)	Water area depth at LNL (m)	Entrance width (m)	Length (m)	Width (m)
-	<i>2.0 – 2.5</i>	-	<i>700</i>	<i>50</i>
Capacity				
Vessels total	Out of which for tankers			
<i>21</i>	<i>0</i>			
Protected against ice drift				
<i>yes</i>				
Infrastructure				
Turning area	Mooring equipment	Illuminated Entrance	Marking	Security service (guards, firemen)
<i>In the Sava River</i>	<i>no</i>	<i>no</i>	<i>no</i>	<i>no</i>
Solid waste disposal facilities	Oil and oily waters disposal facilities	Other waste disposal facilities	Post office	Telephone
<i>no</i>	<i>no</i>	<i>no</i>	<i>in Slav. Šamac settlement</i>	<i>Mobile-crew</i>
Health services	Potable water	Road	Repair service	Other
<i>In Slavonski Šamac</i>	<i>no</i>	<i>yes</i>	<i>no</i>	
Closest inhabited places				
Name		Distance	Type of service and infrastructure in the settlement	
<i>Slaonski. Šamac</i>		<i>1 000 m</i>	<i>Road, shop, post office</i>	
Relevant gauge station				
Name		ASL height „0“	LNL	HNL
<i>Slav. Šamac</i>		<i>80.70</i>	<i>78.79 (-191 cm)</i>	<i>87.21 (651)</i>
Competent port master office				
Name		River kilometre	Contact person	Contact phone number
<i>Slavonski Brod</i>		<i>Sava 362.5</i>	<i>Mladen Žakula</i>	<i>+385 35 446 655</i>

Sketch – scheme of the winter port/winter shelter

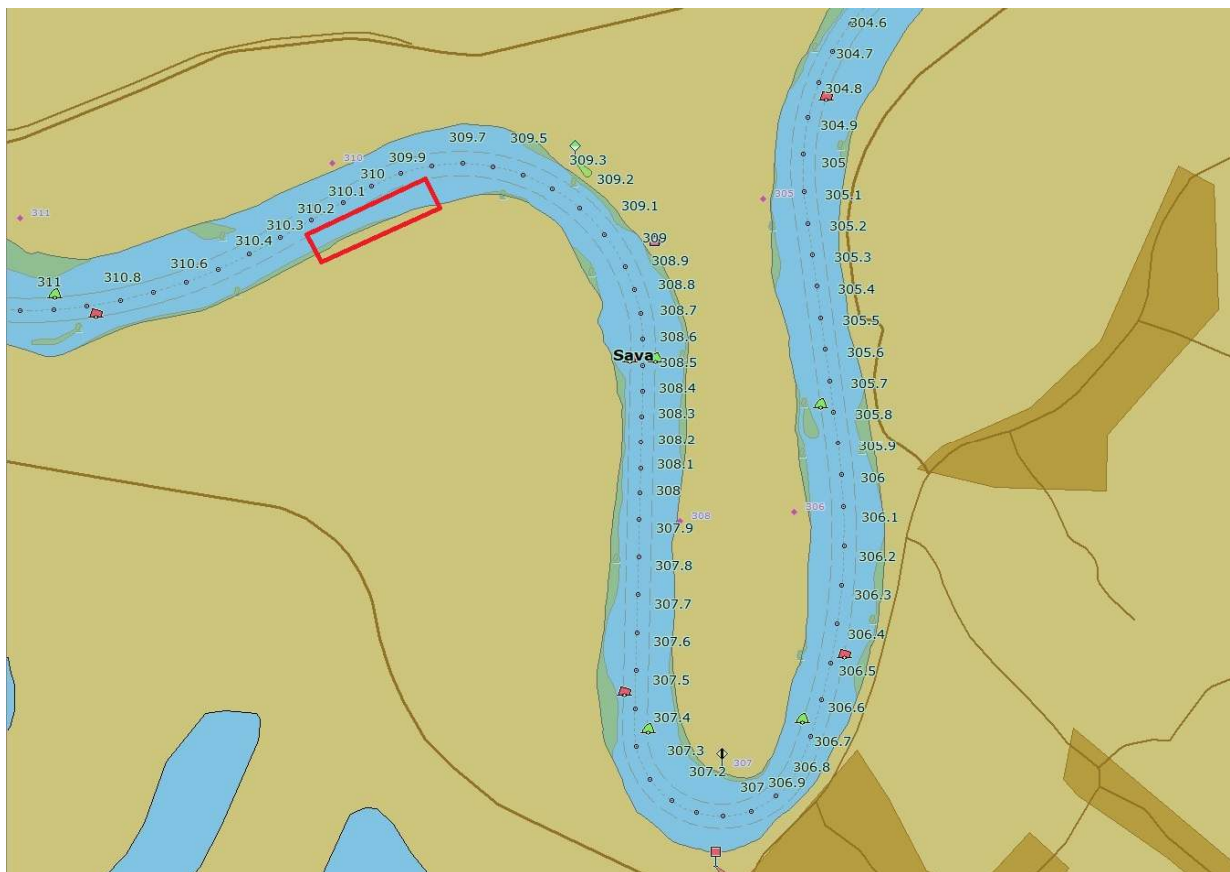


Note

Upon decision of the Port Master Office, the master of the winter shelter organises watch and order at the winter shelter

Name				
WINTER SHELTER ŠAMAC				
Position				
Bank	River kilometre			
<i>Right</i>	<i>310.0</i>			
Dimensions				
Entrance depth at LNL (m)	Water area depth at LNL (m)	Entrance width (m)	Length (m)	Width (m)
	<i>2.00-2.50</i>		<i>500</i>	<i>30</i>
Capacity				
Vessels total	Out of which for tankers			
<i>15</i>	<i>0</i>			
Protected against ice drift				
<i>yes</i>				
Infrastructure				
Turning area	Mooring equipment	Illuminated Entrance	Marking	Security service (guards, firemen)
<i>In the Sava River</i>	<i>no</i>	<i>no</i>	<i>no</i>	<i>no</i>
Solid waste disposal facilities	Oil and oily waters disposal facilities	Other waste disposal facilities	Post office	Telephone
<i>no</i>	<i>no</i>	<i>no</i>	<i>In Šamac settlement</i>	<i>Mobile-crew</i>
Health services	Potable water	Road	Repair service	Other
<i>In Šamac</i>	<i>no</i>	<i>yes</i>	<i>no</i>	
Closest inhabited places				
Name		Distance	Type of service and infrastructure in the settlement	
<i>Šamac</i>		<i>1000 m</i>	<i>Road, shop, post office</i>	
Relevant gauge station				
Name		ASL height „0“	LNL	HNL
<i>Šamac</i>		<i>80.70</i>	<i>78.79 (-191 cm)</i>	<i>87.21 (651)</i>
Competent port master office				
Name		River kilometre	Contact person	Contact phone number
<i>Brčko</i>		<i>Sava 228.0</i>		

Sketch – scheme of the winter port/winter shelter

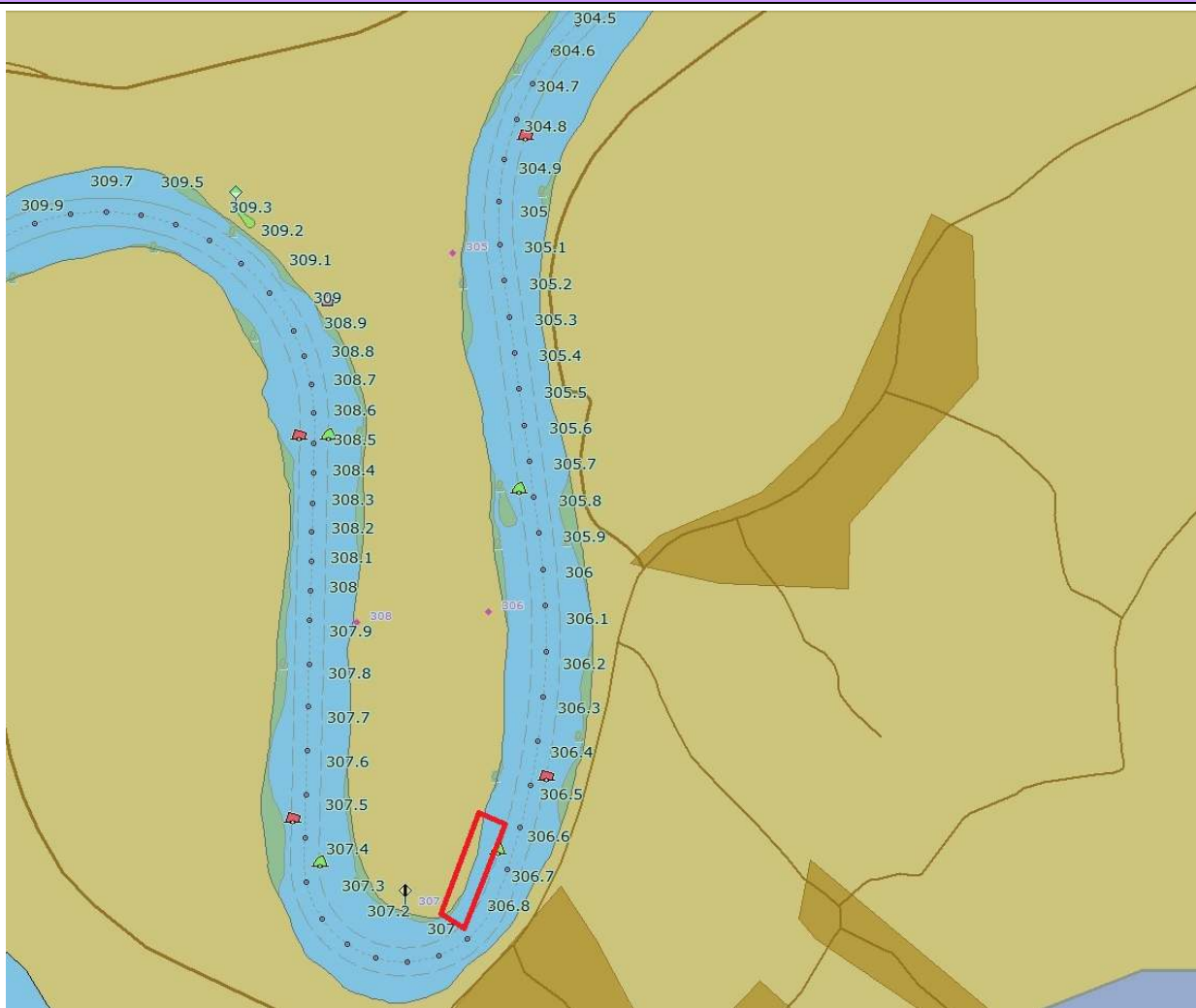


Note

Upon decision of the Port Master Office, the master of the winter shelter organises watch and order at the winter shelter

Name				
WINTER SHELTER UČAJAK				
Position				
Bank	River kilometre			
<i>left</i>	306.6 – 306.9			
Dimensions				
Entrance depth at LNL (m)	Water area depth at LNL (m)	Entrance width (m)	Length (m)	Width (m)
-	2.50	-	300	50
Capacity				
Vessels total	Out of which for tankers			
12	12			
Protected against ice drift				
<i>yes</i>				
Infrastructure				
Turning area	Mooring equipment	Illuminated Entrance	Marking	Security service (guards, firemen)
<i>In the Sava River</i>	<i>no</i>	<i>no</i>	<i>no</i>	<i>no</i>
Solid waste disposal facilities	Oil and oily waters disposal facilities	Other waste disposal facilities	Post office	Telephone
<i>no</i>	<i>no</i>	<i>no</i>	<i>In Slav. Šamac settlement</i>	<i>Mobile-crew</i>
Health services	Potable water	Road	Repair service	Other
<i>In Slavonski Šamac</i>	<i>no</i>	<i>makadam</i>	<i>no</i>	
Closest inhabited places				
Name		Distance	Type of service and infrastructure in the settlement	
<i>Slav. Šamac</i>		<i>5 000 m</i>	<i>Road, shop, post office</i>	
Relevant gauge station				
Name		ASL height „0“	LNL	HNL
<i>Slav. Šamac</i>		<i>80.70</i>	<i>78.79 (-191 cm)</i>	<i>87.21 (651)</i>
Competent port master office				
Name		River kilometre	Contact person	Contact phone number
<i>Slavonski Brod</i>		<i>Sava 362.5</i>	<i>Mladen Žakula</i>	<i>+385 35 446 655</i>

Sketch – scheme of the winter port/winter shelter

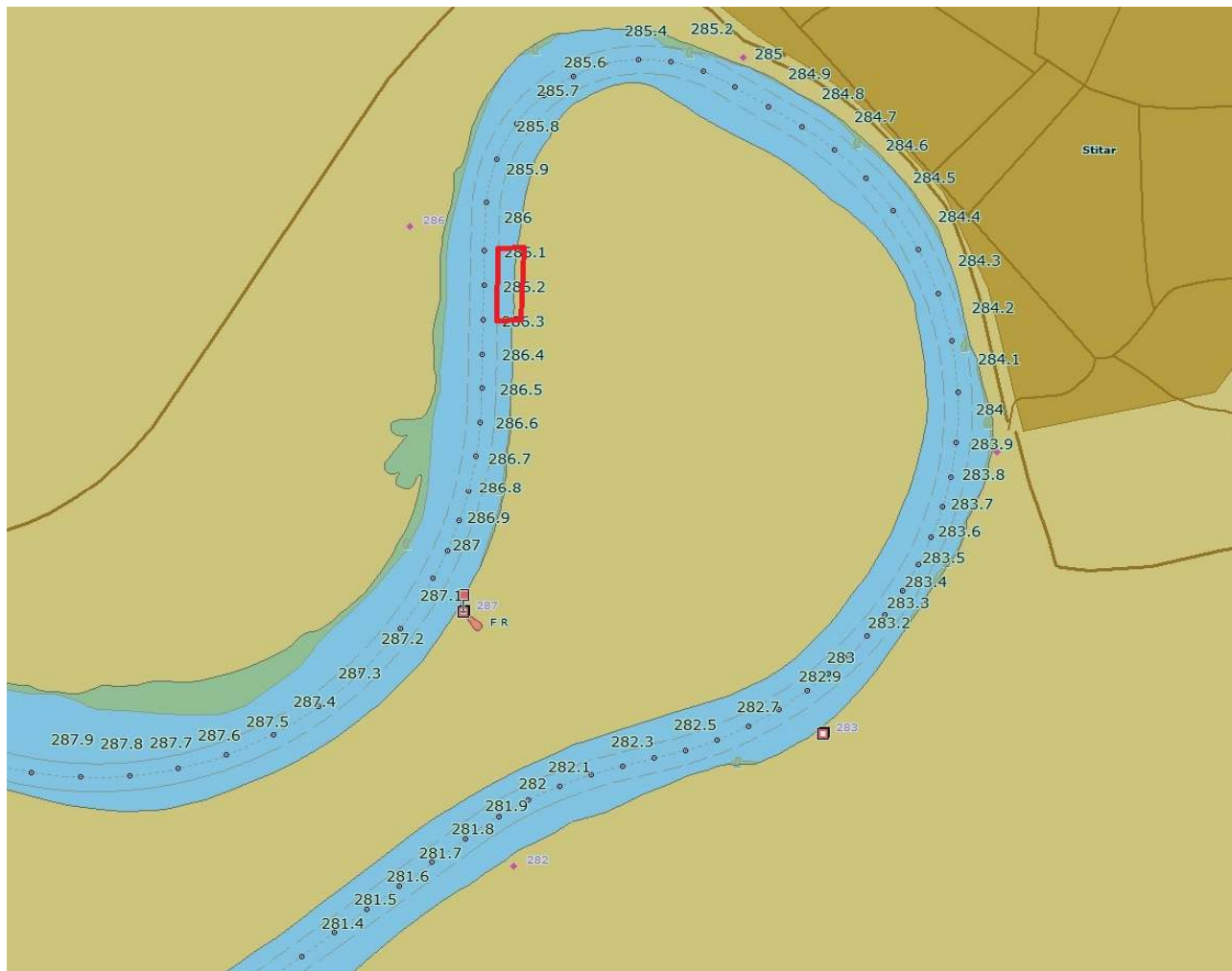


Note

Upon decision of the Port Master Office, the master of the winter shelter organises watch and order at the winter shelter

Name				
WINTER SHELTER ŠTITAR				
Position				
Bank	River kilometre			
<i>left</i>	<i>286.1 – 286.3</i>			
Dimensions				
Entrance depth at LNL (m)	Water area depth at LNL (m)	Entrance width (m)	Length (m)	Width (m)
-	<i>2.00</i>	-	<i>200</i>	<i>60</i>
Capacity				
Vessels total	Out of which for tankers			
<i>8</i>	<i>0</i>			
Protected against ice drift				
<i>yes</i>				
Infrastructure				
Turning area	Mooring equipment	Illuminated Entrance	Marking	Security service (guards, firemen)
<i>In the Sava River</i>	<i>no</i>	<i>no</i>	<i>no</i>	<i>no</i>
Solid waste disposal facilities	Oil and oily waters disposal facilities	Other waste disposal facilities	Post office	Telephone
<i>no</i>	<i>no</i>	<i>no</i>	<i>In Štitar settlement</i>	<i>Mobile-crew</i>
Health services	Potable water	Road	Repair service	Other
<i>In Štitar</i>	<i>no</i>	<i>yes</i>	<i>no</i>	
Closest inhabited places				
Name		Distance	Type of service and infrastructure in the settlement	
<i>Štitar</i>		<i>1 500 m</i>	<i>Road, shop, post office</i>	
Relevant gauge station				
Name		ASL height „0“	LNL	HNL
<i>Županja</i>		<i>76.28</i>	<i>75.90 (-38 cm)</i>	<i>84.43 (+815)</i>
Competent port master office				
Name		River kilometre	Contact person	Contact phone number
<i>Slavonski Brod</i>		<i>Sava 362.5</i>	<i>Mladen Žakula</i>	<i>+385 35 446 655</i>

Sketch – scheme of the winter port/winter shelter

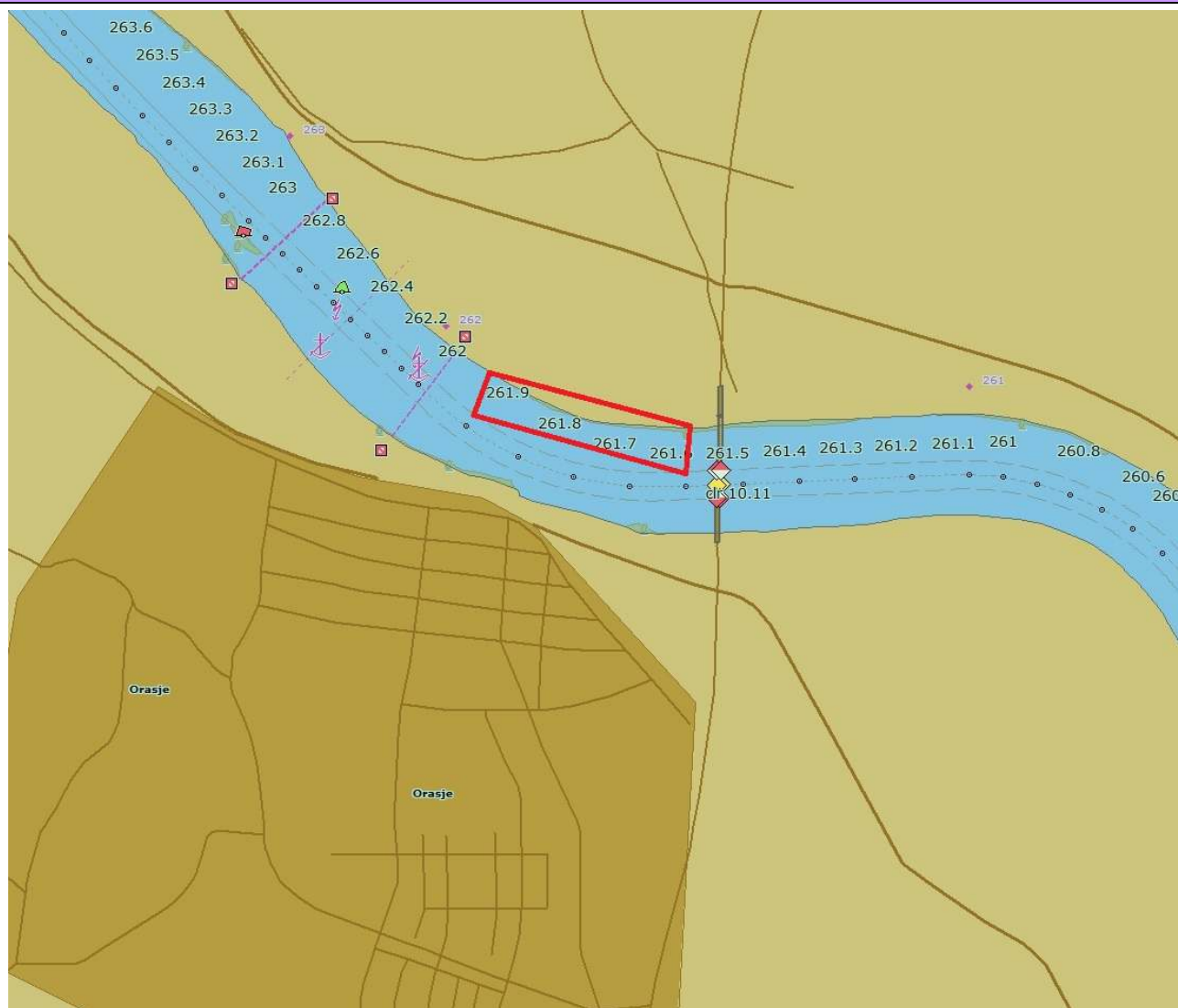


Note

Upon decision of the Port Master Office, the master of the winter shelter organises watch and order at the winter shelter

Name				
WINTER SHELTER ŽUPANJA				
Position				
Bank	River kilometre			
<i>left</i>	<i>261.6 – 261.9</i>			
Dimensions				
Entrance depth at LNL (m)	Water area depth at LNL (m)	Entrance width (m)	Length (m)	Width (m)
-	<i>2.20</i>	-	<i>300</i>	<i>50</i>
Capacity				
Vessels total	Out of which for tankers			
<i>15</i>	<i>6</i>			
Protected against ice drift				
<i>yes</i>				
Infrastructure				
Turning area	Mooring equipment	Illuminated Entrance	Marking	Security service (guards, firemen)
<i>In the Sava River</i>	<i>no</i>	<i>no</i>	<i>no</i>	<i>no</i>
Solid waste disposal facilities	Oil and oily waters disposal facilities	Other waste disposal facilities	Post office	Telephone
<i>no</i>	<i>no</i>	<i>no</i>	<i>in Županja settlement</i>	<i>Mobile-crew</i>
Health services	Potable water	Road	Repair service	Other
<i>In Županja</i>	<i>no</i>	<i>Dirt road</i>	<i>no</i>	
Closest inhabited places				
Name		Distance	Type of service and infrastructure in the settlement	
<i>Županja</i>		<i>3 000 m</i>	<i>Road , shop, post office</i>	
Relevant gauge station				
Name		ASL height „0“	LNL	HNL
<i>Županja</i>		<i>76.28</i>	<i>75.90 (-38 cm)</i>	<i>84.43 (+815)</i>
Competent port master office				
Name		River kilometre	Contact person	Contact phone number
<i>Slavonski Brod</i>		<i>Sava 362.5</i>	<i>Mladen Žakula</i>	<i>+385 446 655</i>

Sketch – scheme of the winter port/winter shelter



Note

Upon decision of the Port Master Office, the master of the winter shelter organises watch and order at the winter shelter

Name				
WINTER SHELTER GUNJA				
Position				
Bank	River kilometre			
<i>left</i>	<i>228.1 – 228.6</i>			
Dimensions				
Entrance depth at LNL (m)	Water area depth at LNL (m)	Entrance width (m)	Length (m)	Width (m)
-	<i>1.40 do 1.90</i>	-	<i>500</i>	<i>20</i>
Capacity				
Vessels total	Out of which for tankers			
<i>10</i>	<i>4</i>			
Protected against ice drift				
<i>no</i>				
Infrastructure				
Turning area	Mooring equipment	Illuminated Entrance	Marking	Security service (guards, firemen)
<i>In the Sava River</i>	<i>no</i>	<i>no</i>	<i>no</i>	<i>no</i>
Solid waste disposal facilities	Oil and oily waters disposal facilities	Other waste disposal facilities	Post office	Telephone
<i>no</i>	<i>no</i>	<i>no</i>	<i>No, in Gunja settlement</i>	<i>Mobile-crew</i>
Health services	Potable water	Road	Repair service	Other
<i>In Gunja</i>	<i>no</i>	<i>Dirt road</i>	<i>no</i>	
Closest inhabited places				
Name		Distance	Type of service and infrastructure in the settlement	
<i>Gunja</i>		<i>500 m</i>	<i>Road , shop, post office</i>	
Relevant gauge station				
Name		ASL height „0“	LNL	HNL
<i>Gunja</i>		<i>74.32</i>	<i>75.63 (+131 cm)</i>	<i>83.12 (+880)</i>
Competent port master office				
Name		River kilometre	Contact person	Contact phone number
<i>Slavonski Brod</i>		<i>Sava 362.5</i>	<i>Mladen Žakula</i>	<i>+385 35 446 655</i>

Sketch – scheme of the winter port/winter shelter

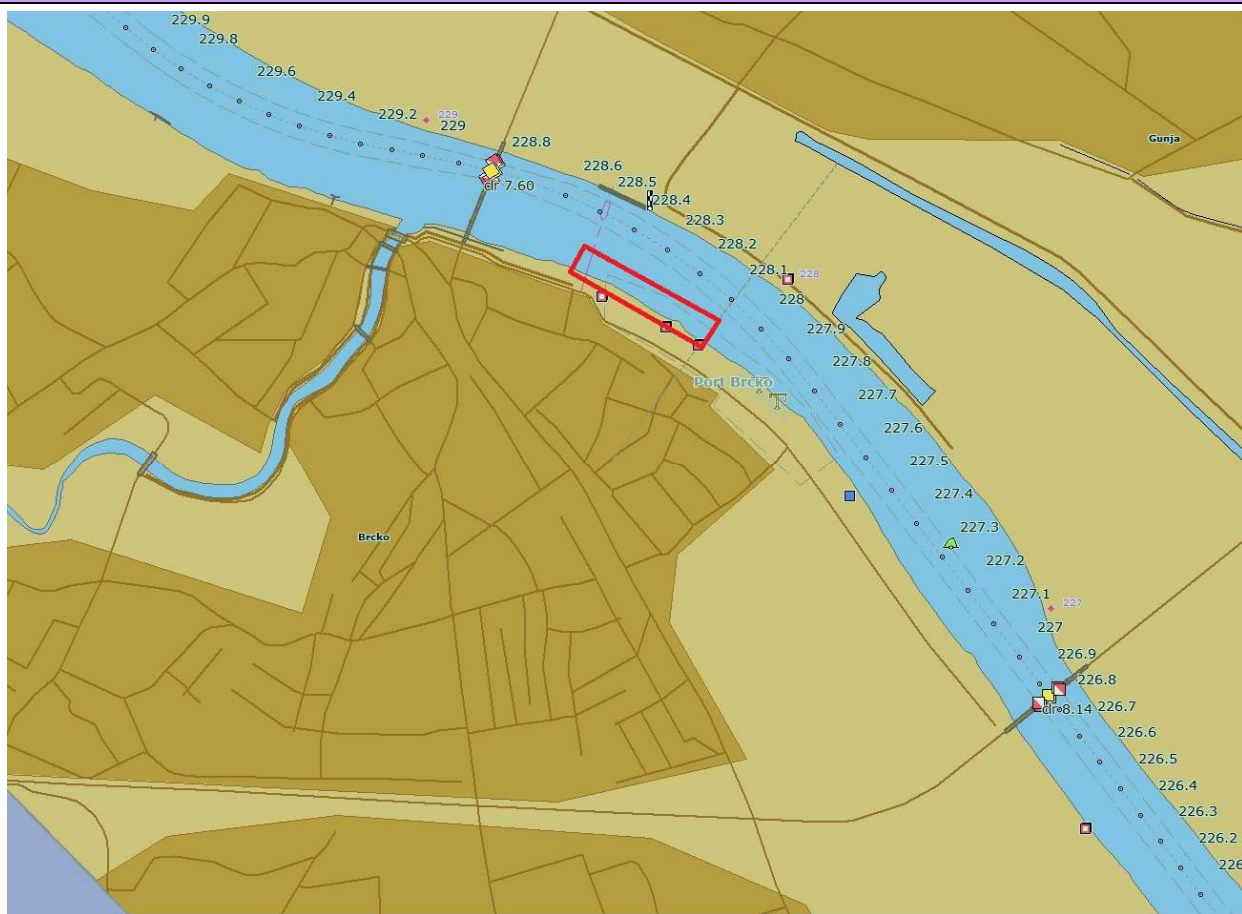


Note

Upon decision of the Port Master Office, the master of the winter shelter organises watch and order at the winter shelter

Name				
WINTER SHELTER BRČKO				
Position				
Bank	River kilometre			
<i>right</i>	<i>228.1-228.5</i>			
Dimensions				
Entrance depth at LNL (m)	Water area depth at LNL (m)	Entrance width (m)	Length (m)	Width (m)
			<i>400</i>	<i>40</i>
Capacity				
Vessels total	Out of which for tankers			
<i>8</i>	<i>0</i>			
Protected against ice drift				
<i>no</i>				
Infrastructure				
Turning area	Mooring equipment	Illuminated Entrance	Marking	Security service (guards, firemen)
<i>In the Sava River (rkm 228)</i>	<i>no</i>	<i>no</i>	<i>no</i>	<i>no</i>
Solid waste disposal facilities	Oil and oily waters disposal facilities	Other waste disposal facilities	Post office	Telephone
<i>no</i>	<i>no</i>	<i>no</i>	<i>yes (Brčko)</i>	<i>Mobile-crew</i>
Health services	Potable water	Road	Repair service	Other
<i>In Brčko</i>	<i>no</i>	<i>yes (asphalt)</i>	<i>no</i>	
Closest inhabited places				
Name		Distance	Type of service and infrastructure in the settlement	
<i>Brčko</i>		<i>0</i>	<i>Customs, GP, port, road, shop, post office</i>	
Relevant gauge station				
Name		ASL height „0“	LNL	HNL
<i>Gunja</i>		<i>74.32</i>	<i>75.63 (+131 cm)</i>	<i>83.12 (+880)</i>
Competent port master office				
Name		River kilometre	Contact person	Contact phone number
<i>Brčko</i>		<i>Sava 228.0</i>	<i>Mladen Rogić</i>	<i>+387 49 216 105</i>

Sketch – scheme of the winter port/winter shelter

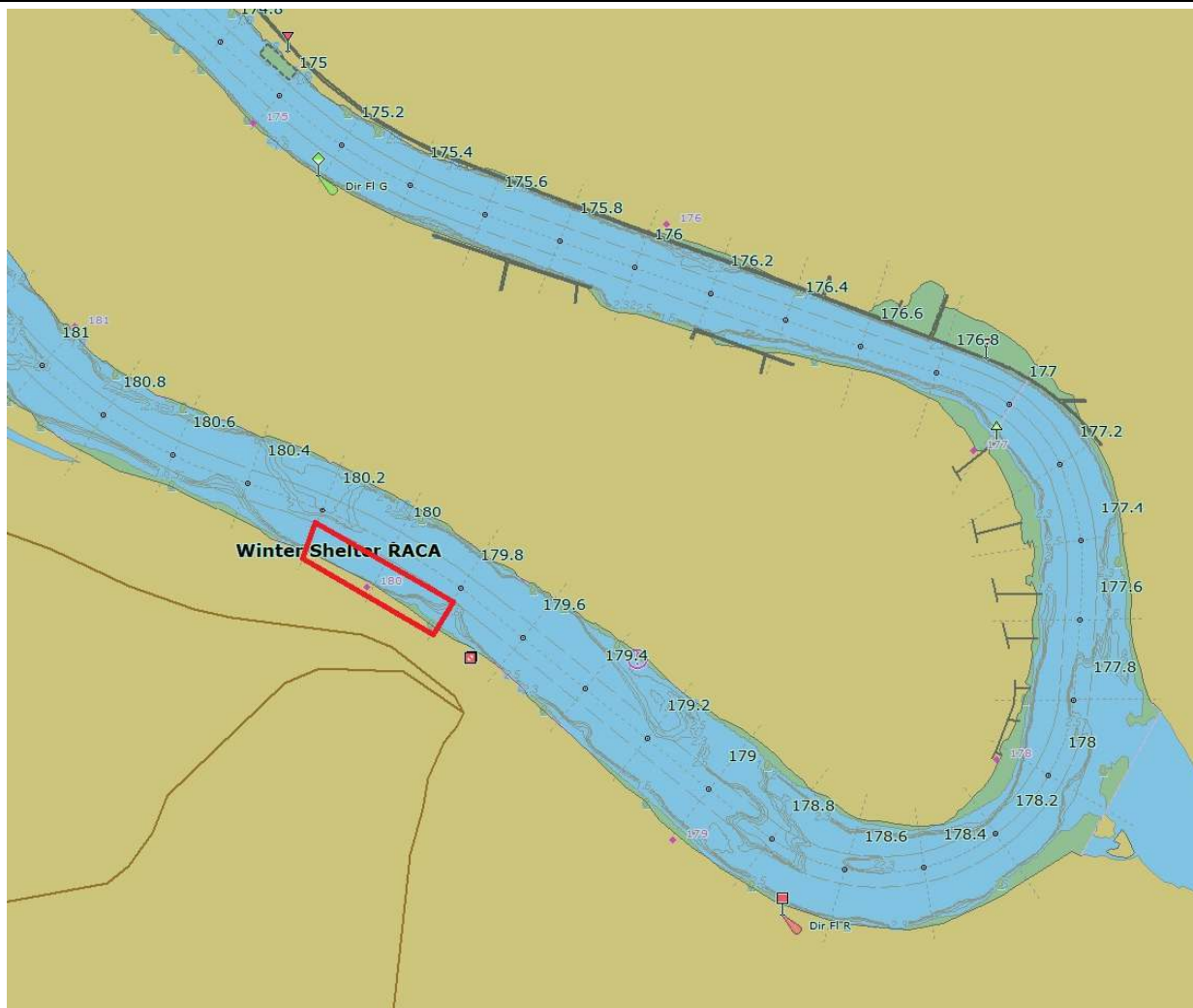


Note

Upon decision of the Port Master Office, the master of the winter shelter organises watch and order at the winter shelter

Name				
WINTER SHELTER RAČA				
Position				
Bank	River kilometre			
<i>right</i>	<i>179.95 - 180.35</i>			
Dimensions				
Entrance depth at LNL (m)	Water area depth at LNL (m)	Entrance width (m)	Length (m)	Width (m)
<i>1.60</i>	<i>1.6 – 6.0</i>		<i>400</i>	<i>35 - 55</i>
Capacity				
Vessels total	Out of which for tankers			
<i>5</i>	<i>0</i>			
Protected against ice drift				
<i>yes</i>				
Infrastructure				
Turning area	Mooring equipment	Illuminated Entrance	Marking	Security service (guards, firemen)
<i>In the Sava River</i>	<i>no</i>	<i>no</i>	<i>no</i>	<i>no</i>
Solid waste disposal facilities	Oil and oily waters disposal facilities	Other waste disposal facilities	Post office	Telephone
<i>no</i>	<i>no</i>	<i>no</i>	<i>In Blatun settlement</i>	<i>Mobile-crew</i>
Health services	Potable water	Road	Repair service	Other
<i>In Bijeljina</i>	<i>no</i>	<i>yes</i>	<i>no</i>	
Closest inhabited places				
Name		Distance	Type of service and infrastructure in the settlement	
<i>Blatun</i>		<i>5 000 m</i>	<i>Road, shop, post office</i>	
Relevant gauge station				
Name		ASL height „0“	LNL	HNL
<i>Jamena</i>		<i>72.44</i>		<i>Extraordinary flood protection measures</i>
Competent port master office				
Name		River kilometre	Contact person	Contact phone number
<i>Brčko</i>		<i>Sava 228.0</i>	<i>Marina Simikić</i>	<i>+387 49 217 589 +387 65 287 676</i>

Sketch – scheme of the winter port/winter shelter

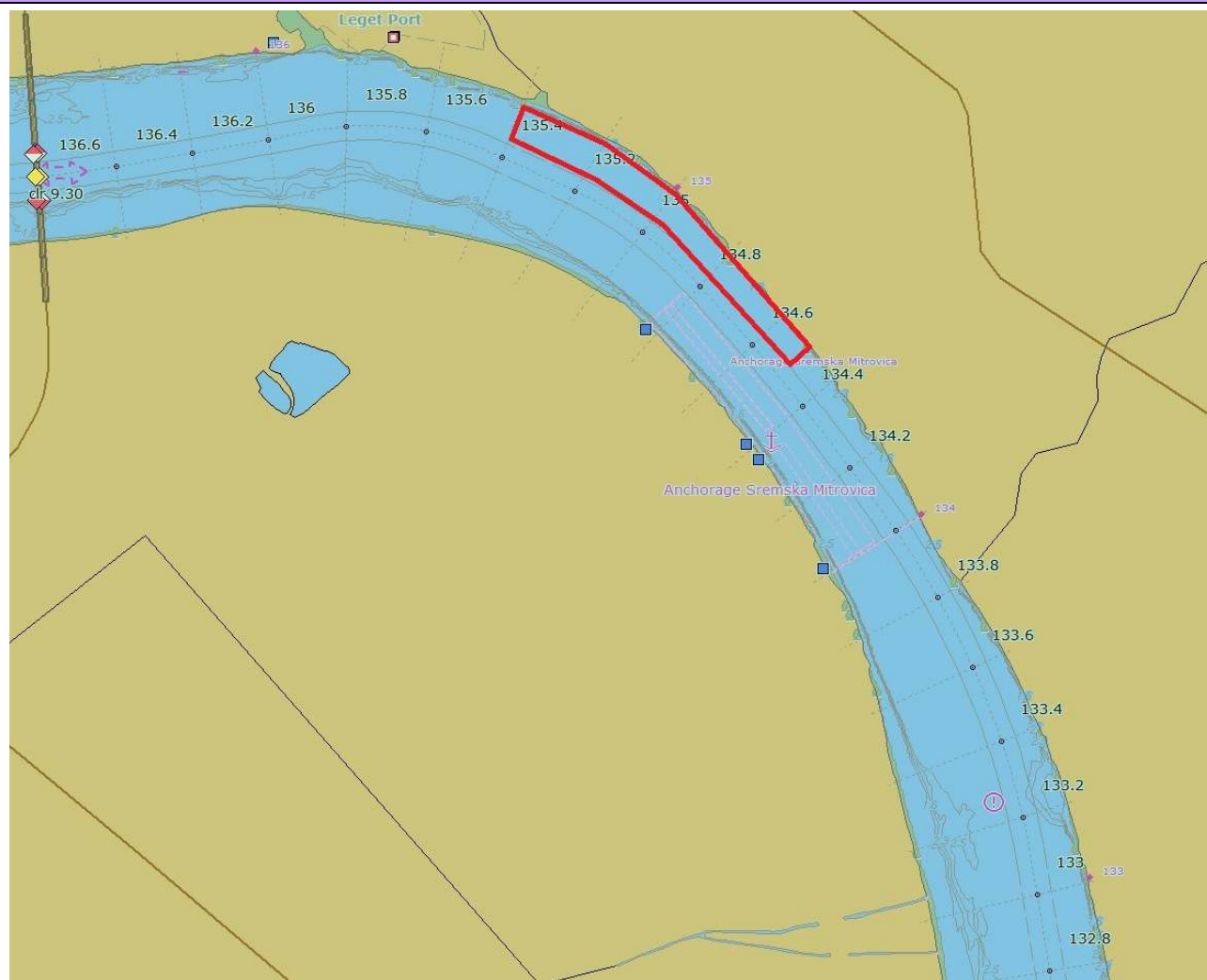


Note

Upon decision of the Port Master Office, the master of the winter shelter organises watch and order at the winter shelter

Name				
WINTER SHELTER SREMSKA MITROVICA				
Position				
Bank	River kilometre			
<i>left</i>	<i>134.6 – 135.4</i>			
Dimensions				
Entrance depth at LNL (m)	Water area depth at LNL (m)	Entrance width (m)	Length (m)	Width (m)
<i>6.0</i>	<i>2.5 -9.0</i>	<i>50 - 90</i>	<i>800</i>	<i>50-90</i>
Capacity				
Vessels total	Out of which for tankers			
<i>10</i>	<i>4</i>			
Protected against ice drift				
<i>no</i>				
Infrastructure				
Turning area	Mooring equipment	Illuminated Entrance	Marking	Security service (guards, firemen)
<i>yes</i>	<i>no</i>	<i>yes</i>	<i>no</i>	<i>no</i>
Solid waste disposal facilities	Oil and oily waters disposal facilities	Other waste disposal facilities	Post office	Telephone
<i>no</i>	<i>no</i>	<i>no</i>	<i>Yes in S. Mitrovica</i>	<i>Yes in S. Mitrovica</i>
Health services	Potable water	Road	Repair service	Other
<i>yes in S. Mitrovica</i>	<i>yes ,in S.Mitrovica or in port „Leget“</i>	<i>yes</i>	<i>In shipyard M.Mitrovica</i>	<i>In the imediate vicinity of the port „Leget“</i>
Closest inhabited places				
Name		Distance	Type of service and infrastructure in the settlement	
<i>Sremska Mitrovica</i>		<i>3000 m</i>	<i>Traffic artery, shops</i>	
Relevant gauge station				
Name		ASL height „0“	LNL	HNL
<i>Sremska Mitrovica</i>		<i>72.22</i>	<i>+37</i>	<i>+622</i>
Competent port master office				
Name		River kilometre	Contact person	Contact phone number
<i>Sremska Mitrovica</i>		<i>138+900</i>	<i>Captain in charge</i>	<i>+381 22 206 4459</i>

Sketch – scheme of the winter port/winter shelter

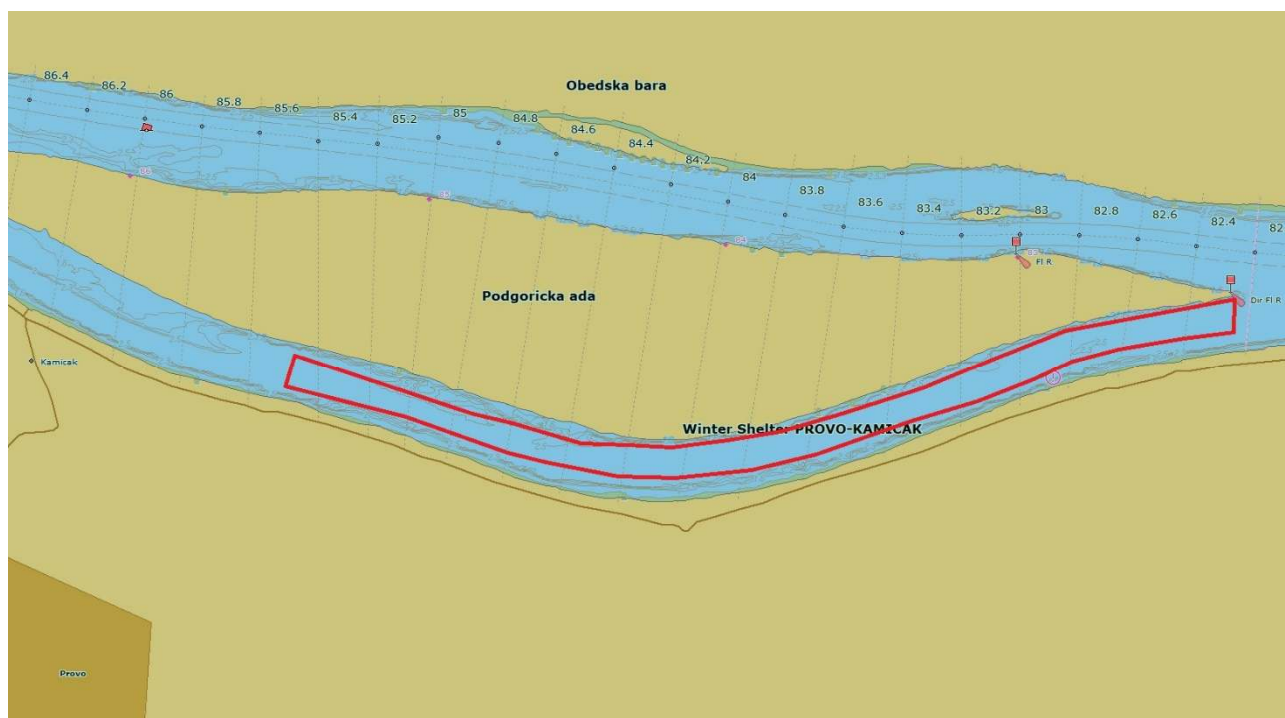


Note

Master of the winter shelter organises watch and order at the winter shelter. If needed to set up the winter shelter, the master shall make an advance announcement to the Port Master Office Sremska Mitrovica

Name				
WINTER SHELTER PROVO-KAMIČAK				
Position				
Bank	River kilometre			
<i>right</i>	<i>82.25 – 85.65</i>			
Dimensions				
Entrance depth at LNL (m)	Water area depth at LNL (m)	Entrance width (m)	Length (m)	Width (m)
<i>2.5</i>	<i>2.3-4.5</i>	<i>145</i>	<i>3400</i>	<i>110-145</i>
Capacity				
Vessels total	Out of which for tankers			
<i>25</i>	<i>25</i>			
Protected against ice drift				
<i>yes</i>				
Infrastructure				
Turning area	Mooring equipment	Illuminated Entrance	Marking	Security service (guards, firemen)
<i>yes</i>	<i>no</i>	<i>no</i>	<i>no</i>	<i>no</i>
Solid waste disposal facilities	Oil and oily waters disposal facilities	Other waste disposal facilities	Post office	Telephone
<i>no</i>	<i>no</i>	<i>no</i>	<i>Yes in Provo</i>	<i>Yes in Provo</i>
Health services	Potable water	Road	Repair service	Other
<i>yes in Provo</i>	<i>yes in Provo</i>	<i>yes</i>	<i>no</i>	
Closest inhabited places				
Name		Distance	Type of service and infrastructure in the settlement	
<i>Provo</i>		<i>300 - 2500 m</i>	<i>Traffic artery, shops</i>	
Relevant gauge station				
Name		ASL height „0“	LNL	HNL
<i>Šabac</i>		<i>72.61</i>	<i>-64</i>	<i>+478</i>
Competent port master office				
Name		River kilometre	Contact person	Contact phone number
<i>Sremska Mitrovica</i>		<i>138+900</i>	<i>Captain in charge</i>	<i>+381 22 206 4459</i>

Sketch – scheme of the winter port/winter shelter

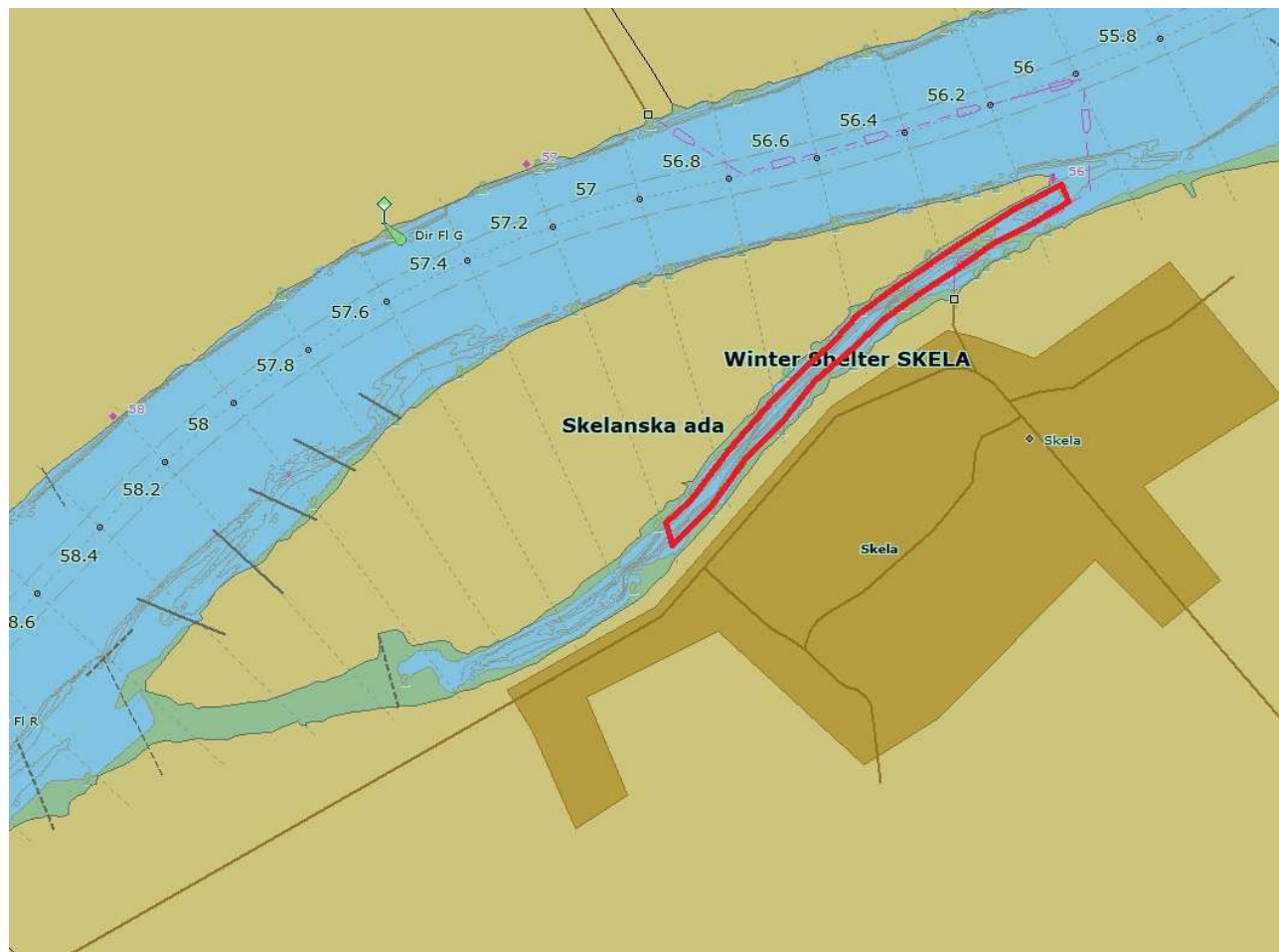


Note

Master of winter shelter organises watch and order at the winter shelter. If needed to set up the winter shelter, the master shall make an advance announcement to the Port Master Office Sremska Mitrovica.

Name				
WINTER SHELTER SKELA				
Position				
Bank	River kilometre			
<i>right</i>	<i>55.9 – 57.5</i>			
Dimensions				
Entrance depth at LNL (m)	Water area depth at LNL (m)	Entrance width (m)	Length (m)	Width (m)
<i>2.4</i>	<i>2.4-3.7</i>	<i>30</i>	<i>1700</i>	<i>20-30</i>
Capacity				
Vessels total	Out of which for tankers			
<i>10</i>	<i>4</i>			
Protected against ice drift				
<i>yes</i>				
Infrastructure				
Turning area	Mooring equipment	Illuminated Entrance	Marking	Security service (guards, firemen)
<i>no</i>	<i>no</i>	<i>no</i>	<i>no</i>	<i>no</i>
Solid waste disposal facilities	Oil and oily waters disposal facilities	Other waste disposal facilities	Post office	Telephone
<i>no</i>	<i>no</i>	<i>no</i>	<i>yes, in Skela</i>	<i>yes, in Skela</i>
Health services	Potable water	Road	Repair service	Other
<i>yes, in Skela</i>	<i>yes, in Skela</i>	<i>yes</i>	<i>-</i>	
Closest inhabited places				
Name		Distance	Type of service and infrastructure in the settlement	
<i>Skela</i>		<i>In the settlement</i>	<i>Traffic artery, shops</i>	
Relevant gauge station				
Name		ASL height „0“	LNL	HNL
<i>Beograd</i>		<i>68.28</i>	<i>+162</i>	<i>+560</i>
Competent port master office				
Name		River kilometre	Contact person	Contact phone number
<i>Beograd</i>		<i>0+500m</i>	<i>Captain in charge</i>	<i>+381 11 2029 900</i>

Sketch – scheme of the winter port/winter shelter



Note

Master of winter shelter organises watch and order at the winter shelter. If needed to set up the winter shelter, the master shall make an advance announcement to the Port Master Office Beograd.

Annex 3: General requirements that the winter ports and winter shelters have to meet on the waterway of the river Sava and its tributaries

1. Table review of potential winter ports and winter shelters on the Sava River and its navigable tributaries

No.	Type	Name	River	Chainage (rkm)/Bank	Total Capacity/ tankers	Waterway class
1.	Winter port	PRELOŠČICA	Sava	582.0/Left	18/8	III
2.	Winter shelter	STARA GRADIŠKA	Sava	466.4 -466.9/Left	8/0	III
3.	Winter shelter	PIVARA	Sava	461.0/Right	5+1/0	III
4.	Winter shelter	DAVOR - Matura	Sava	428.7 – 429.1/Left	12/0	III
5.	Winter shelter	DAVOR - Lazine	Sava	424.5 – 425.8/Left	39/39	III
6.	Winter shelter	SL. BROD – Suspension bridge	Sava	374.9 -375.5/Left	24/4	III
7.	Winter shelter	BROD	Sava	370.1 – 370.7/Right	20/0	IV
8.	Winter shelter	SL. BROD – Poloj	Sava	365.8 – 366.3/Left	16/16	IV
9.	Winter shelter	SL. ŠAMAC	Sava	315.5 – 316.2/Left	21/0	III
10.	Winter shelter	ŠAMAC	Sava	310.0/Right	15/0	IV
11.	Winter shelter	VUČJAK	Sava	306.6 – 306.9/Left	12/12	IV
12.	Winter shelter	ŠTITAR	Sava	286.1 – 286.3/Left	8/0	IV
13.	Winter shelter	ŽUPANJA	Sava	261.6 – 261.9/Left	15/6	IV
14.	Winter shelter	GUNJA	Sava	228.1 – 228.6/Left	10/4	IV
15.	Winter shelter	BRČKO	Sava	228.1 - 228.5/Right	8/0	IV
16.	Winter shelter	RAČA	Sava	179.95 - 180.35/Right	5/0	III
17.	Winter shelter	S. MITROVICA	Sava	134.6 – 135.4/Left	10/4	IV
18.	Winter shelter	PROVO-KAMIČAK	Sava	82.25 – 85.65/Right	25/25	IV
19.	Winter shelter	SKELA	Sava	55.9 – 57.5/Right	10/4	Va

2. Definition of commitment of winter ports and winter shelters as per the type of cargo:

1. winter ports and winter shelters for vessels carrying hazardous substances – are exclusively intended for accommodation of vessels that are obligated to have marks in accordance with the Article 3.14 of the Navigation Rules on the Sava River Basin;
2. winter ports and winter shelters for vessels that do not transport hazardous substances are intended for accommodation of all sorts of vessels except those stipulated under item 1 above;
3. winter ports and winter shelters for all types of vessels.

3. Categorisation of winter ports and winter shelters

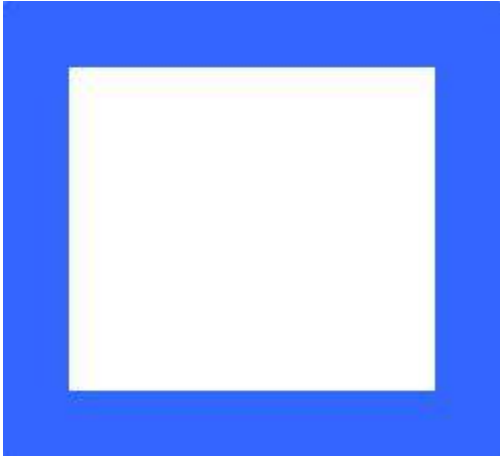
- categorisation of winter ports and winter shelters shall be performed in line with the waterway class of the sector within which they have been declared;
- winter ports and winter shelters cannot have a category lower than the class of the waterway alongside which it is located, but can be of a higher category.

4. Requirements for marking of winter ports and winter shelters

- winter ports and winter shelters shall be marked with marks E.26, E.26.1, E.27 and E.27.1 stipulated under Annex 7 of the Navigation Rules on the Sava River Basin, as well as with marks E 5.4 to E 5.15 of the same Rules when necessary and according to the commitment per type of cargo, which, in the case of marking of the winter ports and winter shelters, can be used as additional ones;
- manner of placement and exact position of the marks shall be determined by the annual Marking Plan for the Sava River and its tributaries;
- if necessary, winter ports or winter shelter can be marked with additional bank marks or floating signs, in accordance with the Navigation Rules on the Sava River Basin, while the marking manner shall be defined by the competent body.

4.1 Basic marking

4.1.1. WINTER PORT (E.26)



4.1.2. WINTER SHELTER (E.27)



4.1.3 THE MAXIMUM ALLOWED NUMBER OF VESSELS AT THE WINTER PORT (E.26.1)



4.1.4. MAXIMUM ALLOWED NUMBER OF
VESSELS AT THE WINTER SHELTER
(E.27.1)

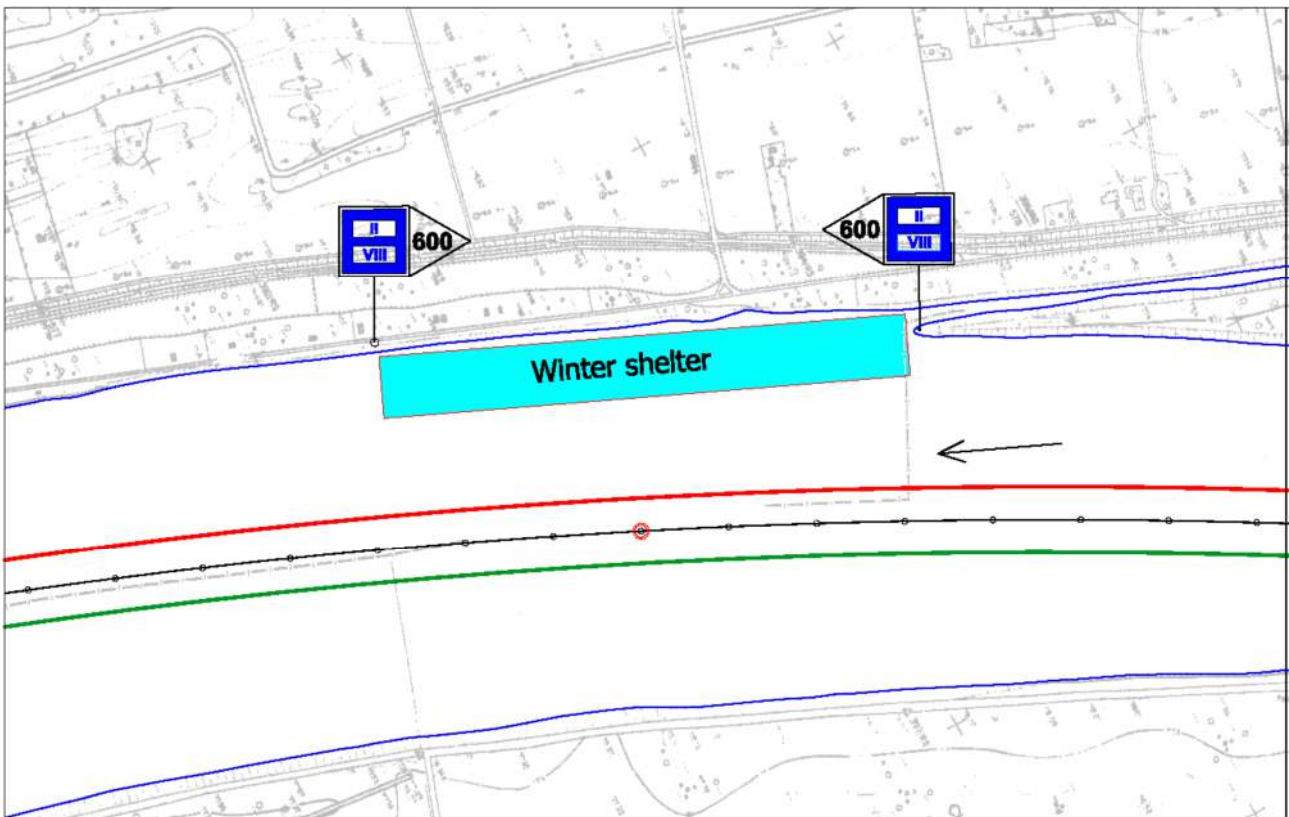
Maximum number of vessels permitted to
berth abreast

Maximum number of rows of vessels which
are berthed abreast

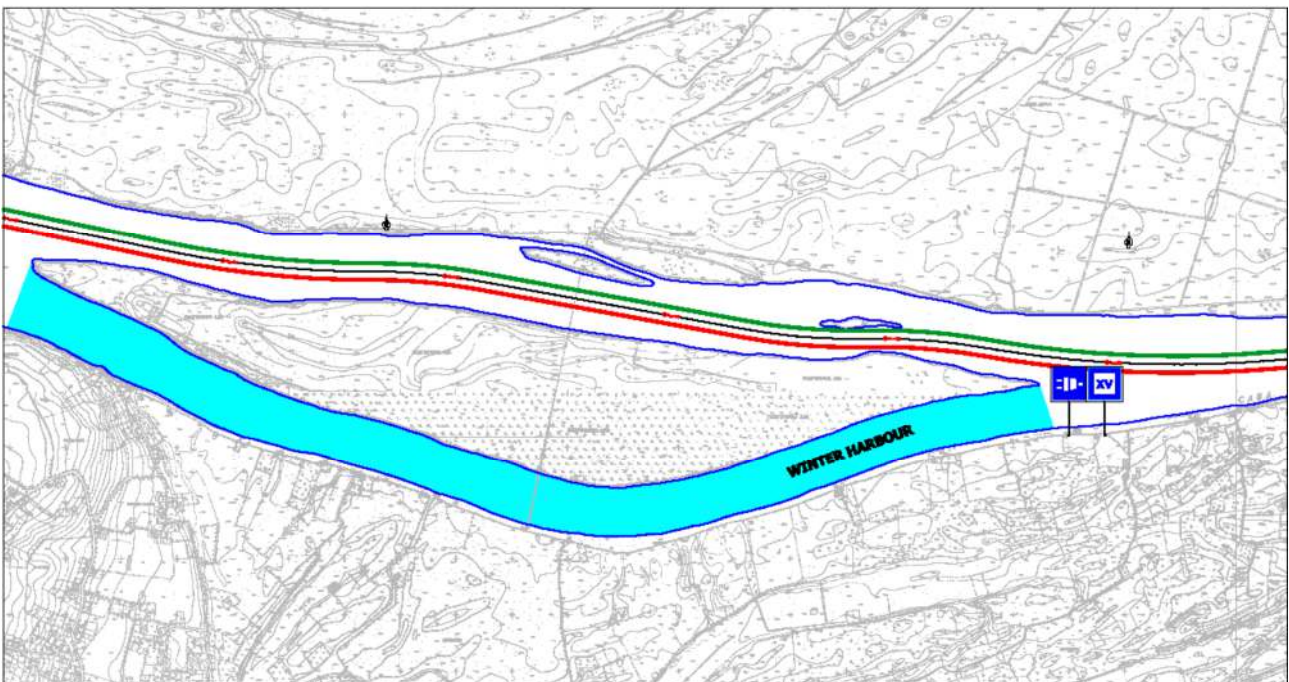


4.2. Examples of the winter port and winter shelter marking

4.2.1. Marking of the winter shelter in the open channel - with marks E.27.1 defining maximum number of vessels allowed in the winter shelter, along with the additional panels showing the distance at which the regulation applies



4.2.2. Marking of the winter port in the river branch - with mark E.26.1 defining the maximum number of vessels allowed in the winter port and additional mark E.25 for available electric power supply



5. General requirements that winter ports need to meet (shall be applicable following their declaration by the competent bodies - Article 8 of these Rules):
- the marked access waterway with sufficient depth and width, which are in line with the waterway class applicable on the section winter ports is located on and at the applicable navigation level;
 - the marked water area of sufficient depth in line with the purpose and capacity;
 - the turning area of appropriate dimensions;
 - the accessible and regulated bank with the equipment for vessels unberthing;
 - the devices for the reception of waste and other substances;
 - the fire protection equipment, the sanitary node with the running water, connection to electricity supply;
 - approach route.

General requirements the winter shelters need to meet:

- the marked water area of sufficient depth in line with the purpose and capacity.